



Engine Lube Filter Media Comparison



E N D U R A N C E

Donaldson Endurance® is a program that offers a systematic approach to increase engine protection, extend service intervals, and reduce operating costs to fleets.

Brochure No.
F111001 (7/00)

Donaldson®

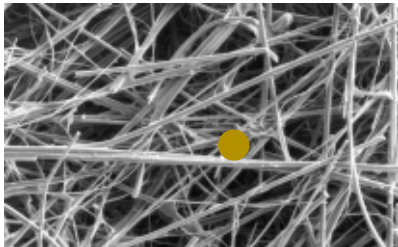
Synteq® Media

Donaldson Endurance® lube filters are made with high performance Synteq® media. The strictly controlled processing of Synteq® media results in fibers that have a controlled size and shape, and a significantly smaller fiber diameter.

This controlled processing allows Donaldson Endurance® lube filters to deliver both higher dirt holding capacity at the same pressure differential and higher efficiency compared to conventional cellulose filters. Synteq media also has better durability with usage.

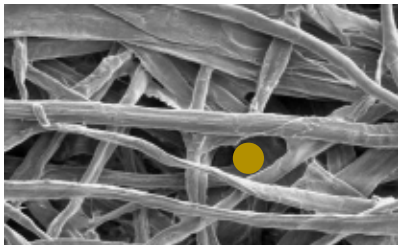
Over the service life of a cellulose filter, hot oil will degrade the resins that bind the media. Our Synteq media technology uses a wire screen backing that is pleated with the media for superior strength.

Synteq® & Cellulose Photos at Same Magnification



Synteq® small, consistent fibers trap smaller particles and hold more contaminants; resulting in lower restriction.

Gold circle represents the diameter of a 20µ particle.



Cellulose fibers are inconsistent in size and shape, allowing more contaminants to pass through; resulting in higher restriction and lower capacity.



Engine Protection Filters Drive Costs Down

Donaldson Endurance® lube filters are made using Donaldson advanced synthetic media technologies. Synteq® media technology delivers cost saving benefits with:

- Extended service life
- Higher level of engine protection to prolong engine and equipment life
- Improved lubricant flow
- Improved cold start performance



So whether you want to extend maintenance intervals to the limit and run your engine for a million miles without an overhaul, or whether you are maintaining a national fleet or running a coal mine, Donaldson Endurance® filters can lower your total operating costs.

Keys To Successfully Extending Maintenance Intervals

1. Consult with engine manufacturers, oil suppliers and your Donaldson filter supplier for recommendations and advice.
2. Use an appropriate API certified oil and Donaldson Endurance® filters.
3. Use a reputable oil analysis service to monitor engine oil condition. Every vehicle participating in an extended drain program should use oil analysis.
4. Keep in mind other required maintenance - grease, safety checks, etc. that need to be done and create schedules that optimize all maintenance procedures.



Start with kit number EOA7376 with LEM and TBN (Total Base Number) to help develop the ideal drain interval for your fleet. Once your new extended drain interval has been established, you can than change to kit number EOA7375 with LEM for on-going monitoring. For more info, request Brochure No. F110058.



Donaldson®

Donaldson Company, Inc.
Minneapolis, MN
55440-1299
www.donaldson.com

© 2000
Printed in the U.S.A.
Equal Opportunity Employer
Donaldson Company, Inc. reserves the right to change or discontinue any model or specification at any time and without notice.

United States & Canada
Distributors
Tel: 800-374-1374
Fax: 952-887-3716
www.donaldson-filters.com

Dealers
Tel: 888-888-3835
Fax: 952-887-3008

Mexico
Tel: 52-53-627320
Fax: 52-53-978654

Latin America
& Caribbean
Tel: 952-887-3149
Fax: 952-887-3002

Belgium
Tel: 32-16-38-3811
Fax: 32-16-40-0077

Australia
Tel: 61-2-4352-2022
Fax: 61-2-4351-2036

Singapore
Tel: 65-546-4400
Fax: 65-546-4325