

FEATURES

WL15 in-tank filter meets the HF4 automotive standard. The E4051 service elements interchange with Schroeder K series and Zinga RE-409 series. An optional weld ring provides an easy solution to insure a positive seal between housing and reservoir. The quick disconnect cover allows for easy and efficient element change-outs. An optional secondary inlet port offers the use of a second return line. An optional weld ring provides an easy solution to insure a positive seal between housing and reservoir. Five standard grades of media are offered down to 4.0µ(c).

Western Filter elements are compatible with petroleum oils, water glycol, oil/water, HWCF and synthetic fluids.

Technical Data:

Maximum Working Pressure	200 psi (14 bar)
Rated Burst Pressure	300 psi max (20.7 bar)
Temperature Range	Operating
Buna N	-45°F to + 225°F (-45°C to + 107°C)
Viton	-20°F to + 250°F (-29°C to + 121°C)
Head and Cover Material	Aluminum
Canister Material	Steel
Weight	
Assembly length 3	5.25 lbs. (2,3 kg.)
Assembly length 9	6.25 lbs. (2,8 kg.)

WL15

50 gpm (189 l/min)

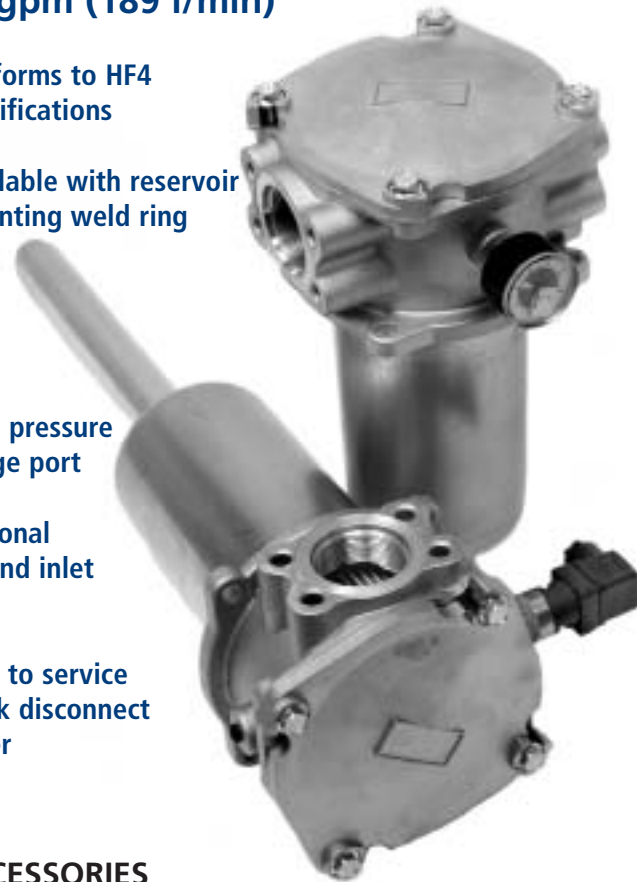
Conforms to HF4 specifications

Available with reservoir mounting weld ring

Dual pressure gauge port

Optional second inlet port

Easy to service quick disconnect cover



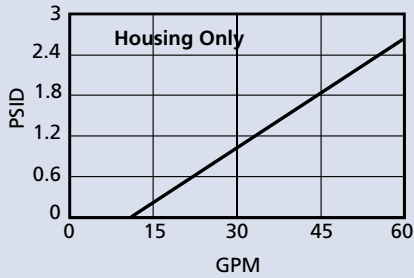
ACCESSORIES

Seal Kit - Buna N	P-233055-01
Seal Kit - Viton	P-233055-03
Weld Ring	P-232964-01
Bowl Kit - 9"	P-234930-03B
Bowl Kit - 9" w/ 12" ext.	P-234930-09B
Cover Assembly	P-134230
Color coded pressure gauge for 25 psid bypass	P232965-01
Color coded pressure gauge for 50 psid bypass	P-238114-01
Hold-Down Spring	P-40005
Bypass Assy - 25 psid	P-235098
Bypass Assy - 50 psid	P-234728

Housing and Filter Element

Flow versus Pressure Drop

150 SUS (32 cst.) oil with specific gravity ≤ 0.9

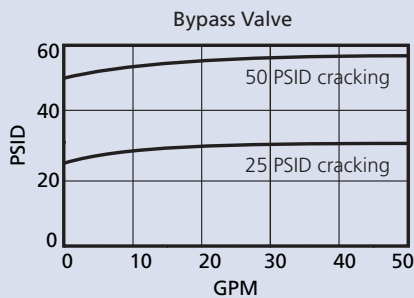
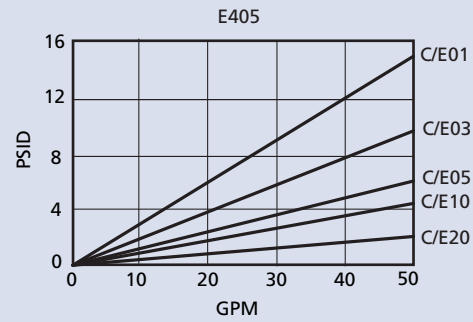
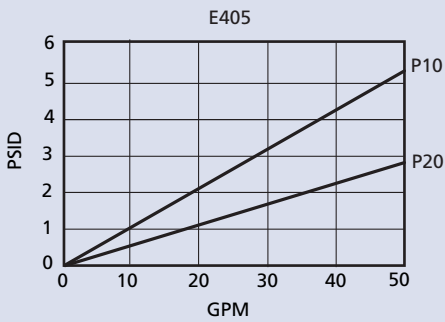


Viscosity Correction Formula

$$\Delta P \text{ Element} = \text{psid from catalog} \times \frac{\text{New Viscosity (SUS)}}{150} \times \frac{\text{New Specific Gravity}}{0.90}$$

$$\Delta P \text{ Element} = \text{psid from catalog} \times \frac{\text{New Specific Gravity}}{0.90}$$

$$\Delta P \text{ Assembly} = \Delta P \text{ Element} + \Delta P \text{ Housing}$$



SPIN-ON FILTERS

IN-TANK FILTERS

LOW PRESSURE FILTERS

MEDIUM PRESSURE FILTERS

HIGH PRESSURE FILTERS



Filter Assembly	WL15 TABLE 1	1 TABLE 2	D TABLE 3	3 TABLE 4	4 TABLE 5	3 TABLE 6	N TABLE 7	B TABLE 8	C TABLE 9	10 TABLE 10
Service Element	E405 TABLE 1	1 TABLE 2	B TABLE 8	3 TABLE 6	C TABLE 9	10 TABLE 10				

Table 1

Filter Assembly / Service Element	
CODE	DESCRIPTION
WL15	Assembly
E405	Element

Table 2

Element Collapse Options	
CODE	DESCRIPTION
1	150 psid

Table 3

Port Size Options	
CODE	PORT SIZE
D	1-7/8" - 12 UN (SAE-24)
E	1-1/2" SAE 4 Bolt Flange Code 61

Table 4

Bypass Setting Options	
CODE	BYPASS SETTING
3	25 psid
4	50 psid

Table 5

Upstream Pressure Gauge and Switch Option	
CODE	INDICATOR STYLE & SETTING
1	No indicator
3	0-60 psi pressure gauge**
4	0-60 psi pressure gauge*
6	Pressure switch 18 psi Brad Harrison (5-pin)
7	Pressure switch 35 psi Brad Harrison (5-pin)
8	Pressure switch 18 psi Hirschmann (4-pin)
9	Pressure switch 35 psi Hirschmann (4-pin)

*Bypass setting option code 3 only
**Bypass setting option code 4 only

Table 6

Assembly & Element Length	
CODE (LGTH)	ELEMENT LENGTH
3 (12.76")	9.0"
9 (24.88")*	9.0"

*With 12" extension tube

Table 7

Secondary Port Options	
CODE	PORT SIZE
T	1-7/8" - 12 UN (SAE-24)
Z	1-1/2" SAE 4 Bolt Flange Code 61
N	None

Table 8

Seal Options	
CODE	MATERIAL
B	Buna N
V	Viton

Table 9

Element Code	
CODE	DESCRIPTION
C	(Glass) 01, 03, 05, 10, 20
P	(Cellulose) 10, 20

Table 10

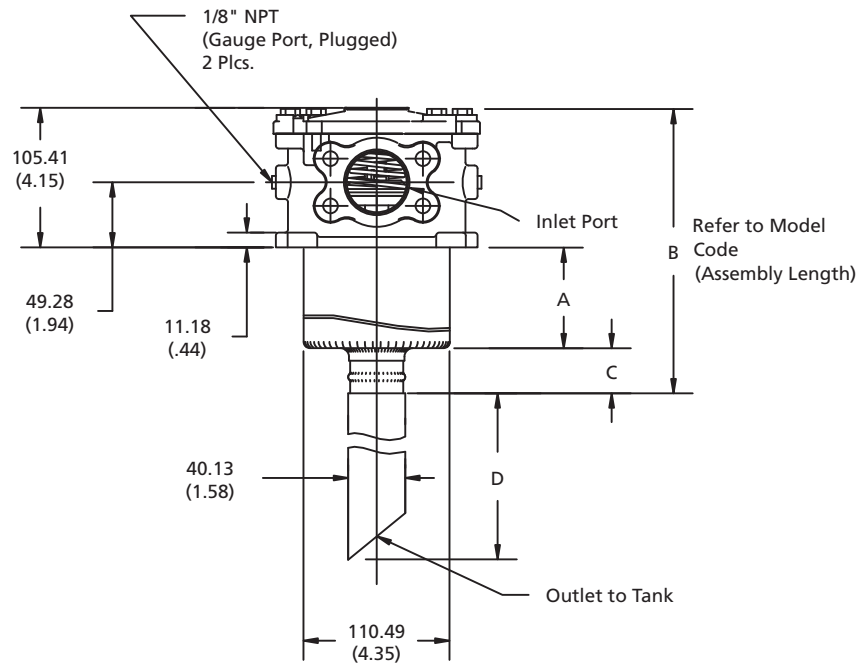
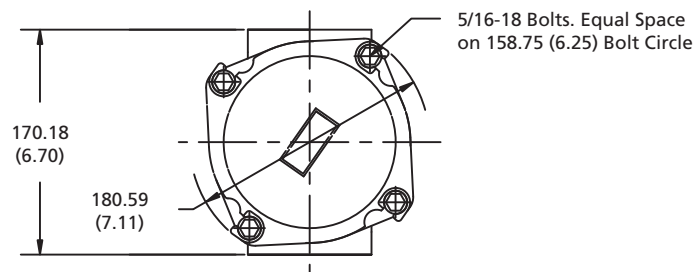
Media Rating	
CODE	TARGET FLUID CLEANLINESS LEVEL
01	Flushing only
03	16/14/12 or better
05	18/16/14 or better
10	20/18/15 or better
20	22/19/16 or better

Note: Information concerning fluid cleanliness codes is on page 6, the Media Grade Selection Guide.

Indicator Switch Schematic Wiring Diagram
Dimensions: millimeter/inch

Dimensions: MM (IN.)

	A	B	C	D
3	193.50 (7.62)	324.10 (12.76)	30.48 (1.20)	—
9	193.50 (7.62)	324.10 (12.76)	—	307.85 (12.12)



SPIN-ON FILTERS

IN-TANK FILTERS

LOW PRESSURE FILTERS

MEDIUM PRESSURE FILTERS

HIGH PRESSURE FILTERS