

FEATURES

WL16 in-tank meets the HF4 automotive standard. The E4051 service elements interchange with Schroeder K series and Zinga RE-409 series. An optional weld ring provides an easy solution to insure a positive seal between housing and reservoir. The quick disconnect cover facilitates for easy and efficient element change-outs. An optional secondary inlet port offers the use of a second return line. These units can be top or side reservoir mounted. Use the optional anti-backflow valve when installing this filter assembly to side of reservoir. Five standard grades of media are offered down to 4.0µ(c). Z-Pac™ stainless steel media is also available.

Western Filter elements are compatible with petroleum oils, water glycol, oil/water, HWCF and synthetic fluids.

Options and configurations formerly offered in our WL15 Series have now been integrated into our WL16 Series as indicated on the following pages (Code length 3 and 9 with optional extension tube).

Technical Data:

Maximum Working Pressure	200 psi (14 bar)
Rated Burst Pressure	300 psi max (21 bar)
Temperature Range	Operating
Buna N	-45°F to + 225°F (-45°C to + 107°C)
Viton	-20°F to + 250°F (-29°C to + 121°C)
Head and Cover Material	Aluminum
Canister Material	Steel
Weight	
Assembly length 3	5.25 lbs. (2,3 kg.)
Assembly length 6	16 lbs. (7,3 kg.)
Assembly length 7	23 lbs. (10 kg.)
Assembly length 9	6.25 lbs. (2,8 kg.)

WL16

150 gpm (568 l/min)

Conforms to HF4 automotive specifications

Available with reservoir mounting weld ring

Replacement elements are available in C-Pak™, E-Pak™, W-Pak™ and Z-Pak™

Dual pressure gauge ports

Optional second inlet port

Optional check valve

Easy to service slotted cover



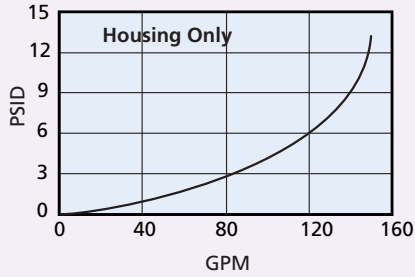
ACCESSORIES

Seal Kit - Buna N	P-233055-01
Seal Kit - E.P.R.	P-233055-02
Seal Kit - Viton	P-232964-03
Outlet Check Valve	P-137457
Outlet Diffusor	P-239290
Core tube assembly-Code length 3 & 90	PW451R3BN
Core tube assembly-Code length 6	PW451R6BN
Core tube assembly-Code length 7	PW451R7BN

Housing and Filter Element

Flow versus Pressure Drop

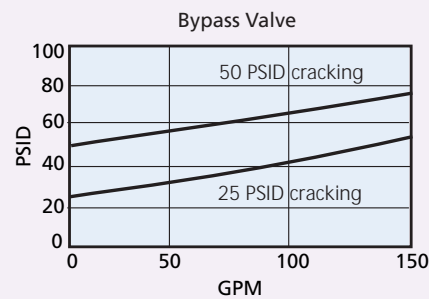
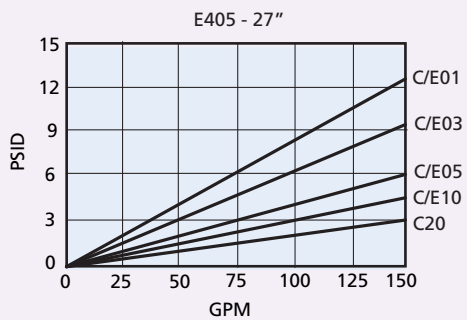
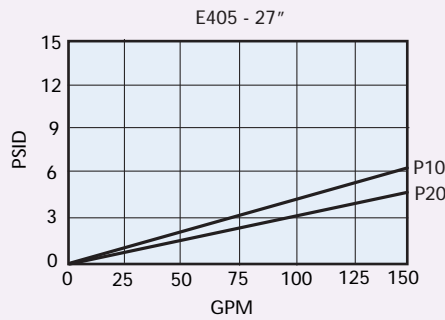
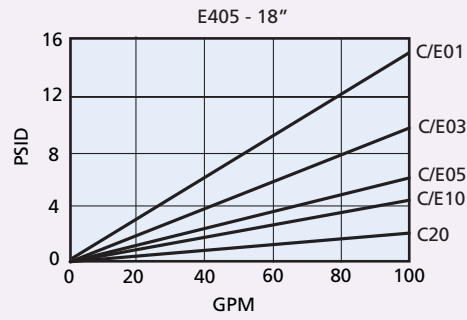
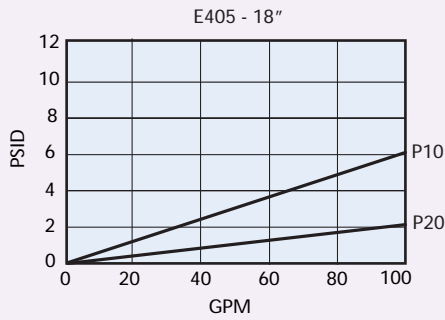
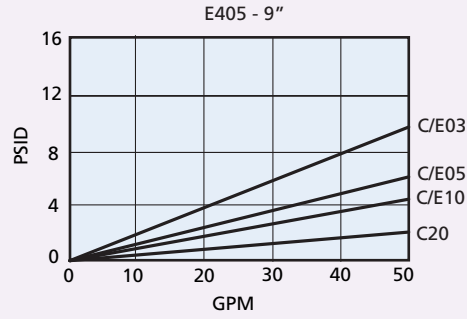
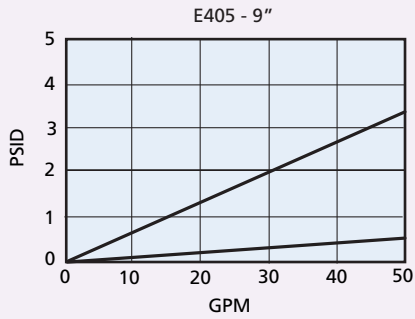
150 SUS (32 cSt.) oil with specific gravity ≤ 0.9



Viscosity Correction Formula

$$\Delta P \text{ Element} = \text{psid from catalog} \times \frac{\text{New Viscosity (SUS)}}{150} \times \frac{\text{New Specific Gravity}}{0.90}$$

$$\Delta P \text{ Housing} = \text{psid from catalog} \times \frac{\text{New Specific Gravity}}{0.90}$$

$$\Delta P \text{ Assembly} = \Delta P \text{ Element} + \Delta P \text{ Housing}$$


LOW PRESSURE SPIN-ON FILTERS

MEDIUM PRESSURE SPIN-ON FILTERS

IN-TANK FILTERS

LOW PRESSURE FILTERS

MEDIUM PRESSURE FILTERS

HIGH PRESSURE FILTERS

Filter Assembly	WL16 TABLE 1	1 TABLE 2	D TABLE 3	4 TABLE 4	2 TABLE 5	6 TABLE 6	N TABLE 7	B TABLE 8	C TABLE 9	10 TABLE 10
Service Element	E405 TABLE 1	1 TABLE 2	B TABLE 8	6 TABLE 6	C TABLE 9	10 TABLE 10				

Order model code **WL161E346NBC10** for same day shipment.

Table 1

Filter Assembly / Service Element	
CODE	DESCRIPTION
WL16	Assembly
E405	Element

Table 2

Element Collapse Options	
CODE	DESCRIPTION
1	150 psid

Table 3

Port Size Options	
CODE	PORT SIZE
D	1-7/8" - 12 UN (SAE-24)
E	1-1/2" SAE 4 Bolt Flange Code 61
U	1-1/2" NPT

Table 4

Bypass Setting Options	
CODE	BYPASS SETTING
3	25 psid
4	50 psid

Table 5

Upstream Pressure Gauge and Switch Option	
CODE	INDICATOR STYLE & SETTING
1	No indicator
2	0-200 psi pressure gauge**
3	0-60 psi pressure gauge**
4	0-60 psi pressure gauge*
6	Pressure switch 18 psi Brad Harrison (5-pin)
7	Pressure switch 35 psi Brad Harrison (5-pin)
8	Pressure switch 18 psi Hirschmann (4-pin)
9	Pressure switch 35 psi Hirschmann (4-pin)

*Bypass setting option code 3 only
**Bypass setting option code 4 only

Table 6

Assembly & Element Length	
CODE (LGTH)	ELEMENT LENGTH
3 (12.76")	9"
6 (16.94")	18"
7 (26.31")	27"
9 (24.88")*	9"

*With 12" extension tube.

Note: Code length 6, 7 & 9 may be stacked using connector part # P-227567-01 and code length 3 elements

Table 7

Secondary Port Options	
CODE	PORT SIZE
T	1-7/8" - 12 UN (SAE-24)
Z	1-1/2" SAE 4 Bolt Flange Code 61
N	None
V	1-1/2" NPT

Table 8

Seal Options	
CODE	MATERIAL
B	Buna N
E	E.P.R.
V	Viton

Table 9

Element Code	
CODE	DESCRIPTION
C	(Glass) 01, 03, 05, 10, 20
E	(Coreless) 01, 03, 05, 10
P	(Cellulose) 10, 20
W	(Water removal) 10
Z	(Stainless Steel)* 60, 25, 260

*Only available in code 3 element length. Elements may be stacked for 18" and 27" assemblies.

Table 10

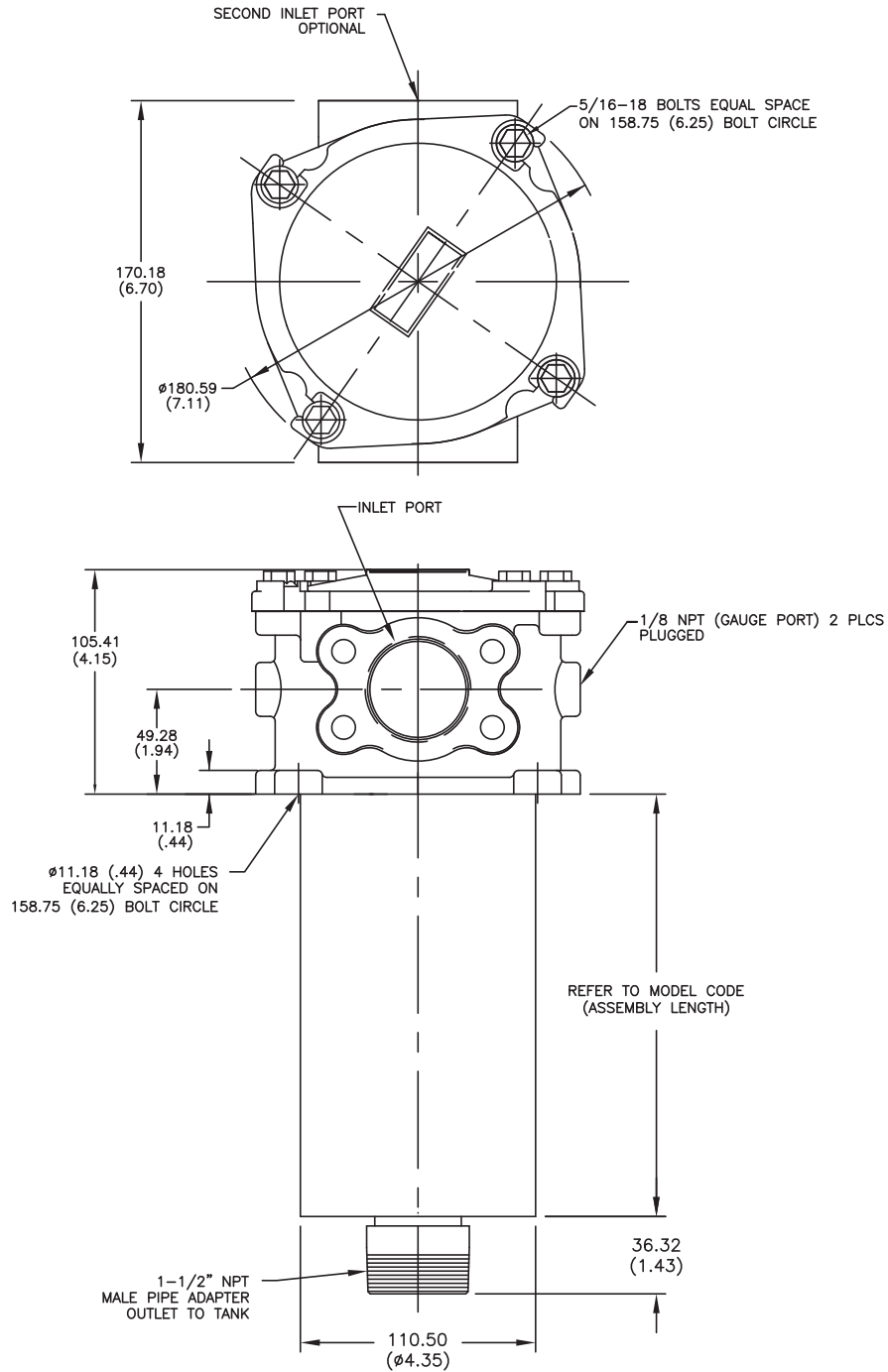
Media Rating	
CODE	TARGET FLUID CLEANLINESS LEVEL
01	Flushing only
03	16/14/12 or better
05	18/16/14 or better
10	20/18/15 or better
20	22/19/16 or better

Note: Information concerning fluid cleanliness codes is on page 6, the Media Grade Selection Guide.

Metric Porting Available

Change WL16 to GL16
Porting code D becomes 1-1/2" ISO 223 BSPP
Porting code E becomes 1-1/2" SAE 4 bolt flange with M12 threads

Dimensions: millimeters/(inches)



LOW PRESSURE
SPIN-ON FILTERS

MEDIUM PRESSURE
SPIN-ON FILTERS

IN-TANK FILTERS

LOW PRESSURE FILTERS

MEDIUM PRESSURE FILTERS

HIGH PRESSURE FILTERS