

Check out Donaldson Europe's New Liftruck & Forklift E-Catalogue (F116014)

Step 1: How to open the E-Catalogue

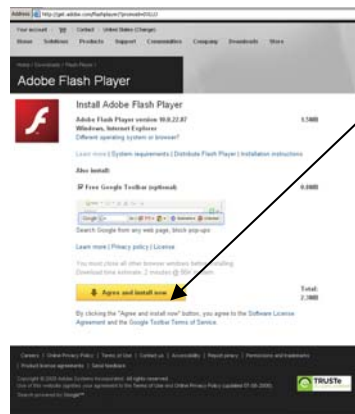
By clicking on following link <http://www.my-catalog.at/42339/katalog.html>, the E-Catalogue will open automatically. No usernames or passwords required!



If the E-Catalogue doesn't open, this means that **Adobe Flash Player 10** is not installed on your pc / labtop.

❶ Installation Adobe Flash Player 10 for none Donaldson people:

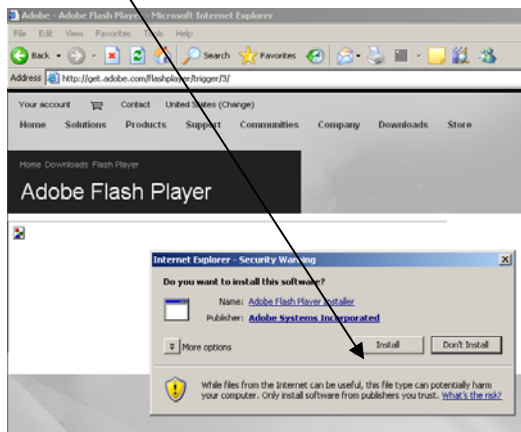
Go to following link <http://get.adobe.com/flashplayer/?promoid=DXLUJ> and click the "Agree and Install now" button.



You may need to click the "gold bar" at the top of your browser window to allow the installation. Select Install Active X Control



Click Install



Once Adobe Flash Player 10 is installed on your pc/labtop, click again on the link of the E-Catalogue to open it.

📍 Installation Adobe Flash Player 10 for Donaldson people:

Please contact our IT HelpDesk and ask them to install since you probably will not be authorised to do this.

📞 +32 16 383850 📧 ITServiceDesk.EMEA@donaldson.com

Step 2: How to use the E-Catalogue

The E-Catalogue is an interactive format of a standard pdf file with following features:



1

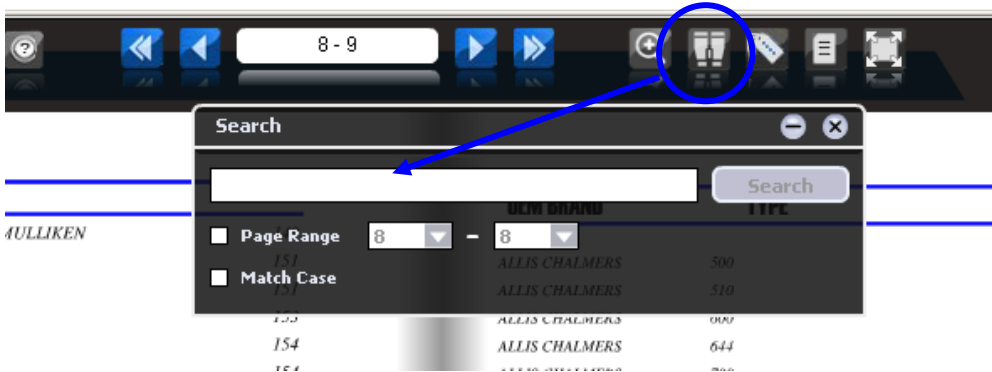
Buttons	Description
Flip to Front Cover	Flip to the front cover
Flip to Back Cover	Flip to the back cover
Flip Left	Flip the left page or previous page
Flip Right	Flip the right page or next page
Page Navigation Box	Reveal the page number of the current page.
Help Tips	Provide the help tips of using FlipViewer® Xpress
Information	Provide information about the publisher or the FlipBook
Zoom	Enlarge the page in a detailed view
Search Book	Search text within the publication
Bookmark	Add bookmark to left or right page and view bookmark list.
Notes	Add Note to anywhere on the page and view Notes list
Full Screen	View FlipBook in full screen mode
Exit Full Screen	Enable FlipBook to exit full screen mode

2

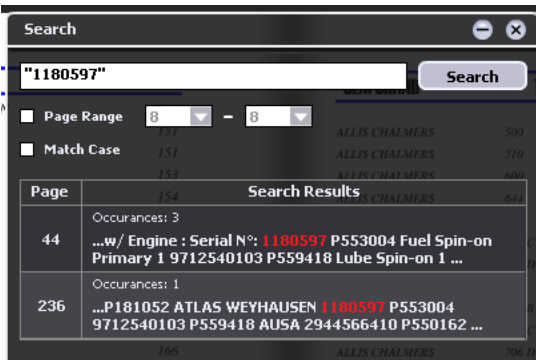
Thumbnail View	Provide the thumbnails of every page in the FlipBook
Print	Print selected pages in the FlipBook
Save as PDF	Save pages as PDF documents
Download FlipBook	Download the FlipBook to the local machine.
Share the FlipBook	Share the FlipBook with friends by sending an email.

③ Search per OE partnumber or Donaldson partnumber

Press the search Toolbar and a search window will open.



Enter the partnumber (OE or Donaldson cross ref) you are looking for and press the search button. You will get an overview of all pages where this number was retrieved.



When you click on the red number, you will be guided automatically to the correct page. The number you are looking for will be indicated in yellow.

Description	OE Number	Donaldson	Qty	Note / or Serial Nbr
ALLIS CHALMERS				
TD 70-24C				
(kW - hp) - (00/00 =>)				
w/ Engine : Allis Chalmers 6B230				
Serial N°:				
Lube Spin-on Full Flow	74511629	P550008	1	
ATLAS WEYHAUSEN				
LIFTTRUCK & FORKLIFT				
ATLAS WEYHAUSEN				
AS 80				
(kW - hp) - (00/00 =>)				
w/ Engine : Deutz F3L912 / F4L912				
Serial N°:				
Fuel Spin-on Primary	1180597	P553004	1	
Lube Spin-on	9712540103	P559418	1	
ATLAS WEYHAUSEN				
AS 101				
(kW - hp) - (00/00 =>)				
w/ Engine : Deutz F3L912 / F4L912				
Serial N°:				
Fuel Spin-on Primary	1180597	P553004	1	
Lube Spin-on	9712540103	P559418	1	
ATLAS WEYHAUSEN				
AS 121				
(kW - hp) - (00/00 =>)				
w/ Engine : Deutz F3L912 / F4L912				
Serial N°:				
Fuel Spin-on Primary	1180597	P553004	1	
Lube Spin-on	9712540103	P559418	1	