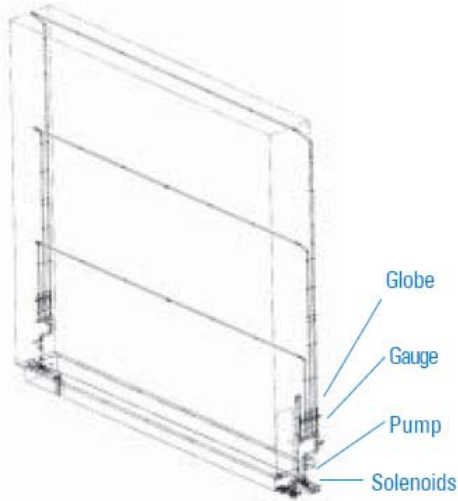




Evaporative Cooler & Chiller Coil Parts



Evaporative cooler section is typically located behind filter section

Evaporative Cooler Service Parts

Description

- Controller, conductivity, 110 VAC, 3/4" NPTF
- Controller, conductivity, 220 VAC, 3/4" NPTF
- Retrofit Kit for adding conductivity controller **
- Gauge, Pressure, 0-60 PSI
- Meter, Flow 2.6 – 26 GPM
- Meter, Flow 5.3 – 53 GPM
- Meter, Flow 7.9 – 79 GPM
- Pump, Centrifugal, 50 Hz, Heater
- Pump, Centrifugal, 50 Hz
- Pump, Centrifugal, 60 Hz, Heater
- Pump, Centrifugal, 60 Hz
- Switch, Multi-Station
- Valve, Ball, 1/8" NPT
- Valve, Ball, 2", Flanged
- Valve, Globe, 1 1/2" NPTF
- Valve, Solenoid, 1 1/2" NPTF

Material

- Stainless steel electrode
- Stainless steel electrode
- Incl. valve, piping, flow meter, couplings, clamps, ...
- Steel case
- Brass
- Brass
- Brass
- Cast iron*
- Cast iron*
- Cast iron*
- Cast iron*
- Brass
- Brass
- Bronze
- Bronze
- Brass

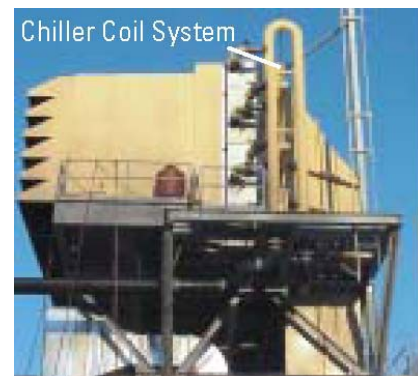
* **Pump:** Cast iron casing, stainless steel shaft, bronze impeller

Motor: Cast iron casing

** When retrofitting an evap cooler with a conductivity controller, order this kit and one of the controllers listed (either 110 or 220 VAC).

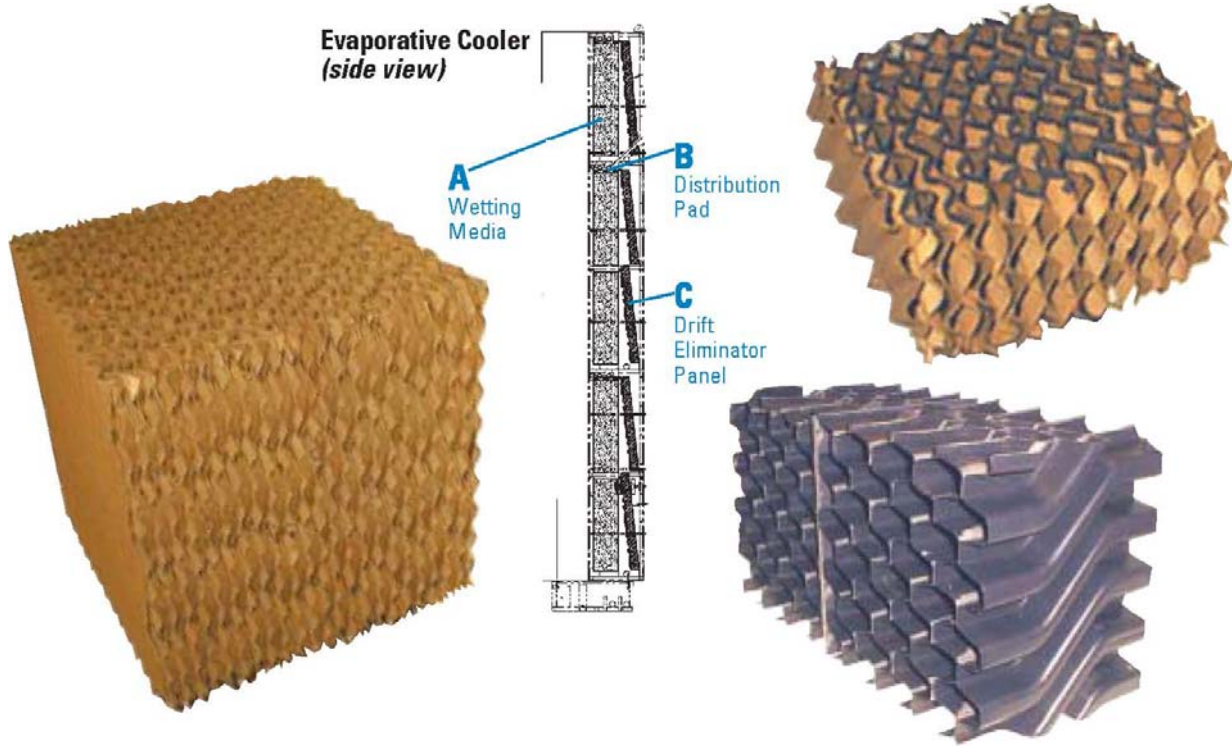
Chiller Coil Service Parts

- Vacuum breaker: Used to relieve pressure and expel air
- Butterfly valve: Controls water flow in piping





Evaporative Cooler Media



Description	Depth	Width	Height
(A) Wetting Media	12"	12"	*
(B) Distribution Pad	12"	2"	*
(C) Drift Eliminator Panel	5 1/4"	12 1/8"	*
	5 1/4"	25 1/4"	*
	5 1/4"	*	*

* Cut your desired length.



5 Signs of Media Deterioration

If you have one or a combination of these conditions in your evaporative cooler media, you know it's time to replace some media panels.

- 1) The ΔP across the evaporative cooler has doubled compared to when it was new.
- 2) Media edges are crumbling.
- 3) The media is mushy.
- 4) There is water downstream of the evaporative cooler.
- 5) The media is separating from the steel framework.