

# Donaldson®

## INDUSTRIAL FILTRATION SOLUTIONS



### Solutions for Bulk Liquid Filtration



Donaldson®  
Filtration Solutions

[www.donaldson.com](http://www.donaldson.com)



# Donaldson® - Solutions

## Why install filtration on bulk oil and diesel systems?

Filtration on bulk oil and diesel systems can control the ingress of solid particulate matter into the system when filling or topping up oil or fuel tanks.

Particles above tolerances in a lube or fuel system slowly wear away at expensive components, shortening their usable life.

By reducing contamination levels in the bulk filtration system, you can reduce:

- maintenance
- downtime
- labor costs
- your total cost of ownership

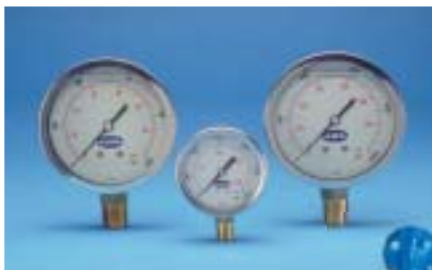
## Essential Components for Clean Oil and Diesel Filter Manifolds

Filter manifolds are installed upstream of the bulk tanks to capture contamination which may be ingressed into the fluid during transportation and handling. Another filter set is installed in the discharge line after the bulk tank on a recirculating line to capture any contaminants from the tank and to achieve the required cleanliness levels.

The double head HMK25 spin-on assembly is mounted in a parallel configuration on a manifold to provide adequate filtration for the required flow rate.

### Donaldson Filter Manifolds feature:

- ASA 150 Inlet and Outlet flanges
- Schedule 40 pipe work
- Upstream and downstream pressure gauges to monitor differential pressures
- Non-bypass to prevent contaminated fluid bypassing the filters
- Shut off valves to facilitate element change out (optimal)



- 2 way-80 gpm/300 lpm, 3 way-100 gpm/400 lpm, 4 way-160 gpm/600 lpm, 5 way-240 gpm/900 lpm. (Listed flow rates are measured for fuel.)
- Can be used with a wide variety of fluids, viscosities and volumes.
- Micron ratings from 3µm to 150µm absolute (@Beta 1000)
- Shut off valves/check valves for fast filter change without shutting down flow.
- Sample points fitted to allow for samples to be taken to monitor cleanliness levels. These points also allow for a gauge adaptor and gauge to be fitted to monitor the differential pressure across the filters. The gauge and gauge adaptor are supplied with the manifold.
- Spin on filters for cleaner filter maintenance.

*Available as standard off-the-shelf manifolds or custom made solutions*

# for Bulk Liquid Filtration

## HEK 11 High Volume Filter Manifolds

- 150 psi/1035 kPa working pressure
- For use with fuel or oil
- Flow rates to 600 gpm/2270 lpm
- Elements from 4 $\mu$ m to 35 $\mu$ m @ Beta 1000 and 150  $\mu$ m nominal wiremesh
- Electrical or visual indicators
- 4" NPT or 2-1/2" SAE 4 bolt (code 61) flange ports
- Inside to outside flow for cleaner element maintenance.



## Tank Breathers

Breathers must be installed on tanks to prevent ingress of airborne solid contamination and moisture.

### Bulk Tank Breather

- Micron ratings from 3 $\mu$ m to 35 $\mu$ m absolute (@Beta 1000)
- Desiccant Breather for water removal
- 1-1/2 bsp internal thread tank attachment
- 8 psi relief valve
- Informer indicator for element condition monitoring
- Replacement Desiccant and filters available
- Capacity of 265 gpm/1000 lpm



## Diesel Systems

In addition to the particulate filters, water removal filters can be installed in the line upstream of the bulk tanks and downstream of the tanks on the filling/recirculating line in diesel systems.

### Fuel filter/water separator

- Replacement element 15 $\mu$ m absolute (@Beta 1000)
- 1-1/2 bsp ports
- 58 psi/1400kPa/4 bar max pressure
- 40 gpm/150 lpm capacity

### Diesel Fuel Water Separator Single Skid

- 40 gpm/150 lpm
- Max pressure 58 psi/1400 kPa/4 bar
- 15 micron absolute (@Beta 1000) water separator element
- 3 micron absolute spin on filters (other  $\mu$ m filters available)

### Diesel Fuel Water Separator Double Skid

- 80 gpm/300 lpm
- Max Pressure 58 psi/1400 kPa/4 bar
- 15 micron absolute (@Beta 1000) water separator element
- 3 micron absolute spin on filters (other  $\mu$ m filters available)



Donaldson  
Filtration Solutions

