

New! Hydraulic Line Accessories!

More of the hydraulic components you need are now available from the fluid power experts at Donaldson. Pressure gauges for monitoring system pressure. Hoses and test points for sampling oil and determining ISO cleanliness levels. Flanges to connect components. Valves for system control. All available from Donaldson, your one stop shop.

We have new reservoir accessories, too! See page 129 for our expanded line of breathers, vents, diffusers, level gauges and much more.



Pressure gauges

Description:

Stainless steel (304SS)
Phosphor bronze bourdon tube
Acrylic lenses
Built-in snubber



Features

Donaldson LHA PGL series gauges are mechanical bourdon tube pressure gauges. Each gauge has a glycerin filled stainless steel bezel and case that is robust and will not discolor or rust. The bourdon tube and movement is constructed from brass and bronze alloys. PGL series gauges are easy to install for continuous readings with face diameters of 1½" (38mm), 2½" (63mm), 4" (100mm) and 6" inch (150mm).

Glycerin filled operating temperature

- +13°F to 150°F / -25°C to 65°C

Accuracy

- +/- 1.5% of full scale

Scale

- *psi*
- *bar*

Dial Sizes

- 1½", 2½", 4" and 6"

Mounting

- Stem, Panel, Front Flange

Thread Type

- 1½" size ¼" NPT
- 2½" size ¼" NPT, ¼" SAE, ¼" BSP
- 4", 6" ½" NPT

Pressure Range Options

PGL-A	30 Hg-20 psi	0-30 in. Hg	0-30 psi	0-60 psi	0-100 psi	0-160 psi	0-300 psi	0-500 psi	0-600 psi	0-1000 psi	0-1500 psi	0-2000 psi	0-3000 psi	0-4000 psi	0-5000 psi	0-6000 psi	0-10000 psi
2½" Stem	•	•	•	•	•	•	•	•	•	•	•	•	•	•	•	•	•
2½" SAE Stem								•	•	•	•	•	•	•	•	•	•
2½" Panel	•	•	•	•	•	•	•	•	•	•	•	•	•	•	•	•	•
4" Stem								•	•	•	•	•	•	•	•	•	•
4" Panel								•	•	•	•	•	•	•	•	•	•
6" Stem								•	•	•	•	•	•	•	•	•	•
6" Panel								•	•	•	•	•	•	•	•	•	•

Front Flange Option

Donaldson Part No.	LHA Part No.	Dial Size
P562699	PGL-A-63-FF	2-1/2"
P562671	PGL-A-100-FF	4"
P562689	PGL-A-150-FF	6"

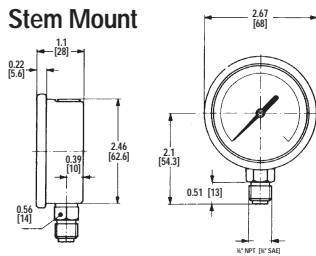
1½" Gauge

1½" Dial, Stem Mount

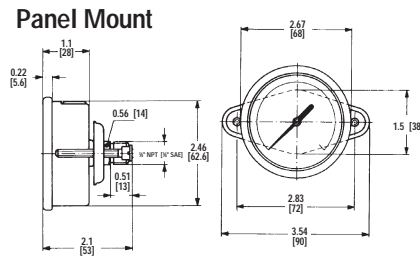
Donaldson Part No.	LHA Part No.	Pressure Range	Thread Type
P563942	PGL-A-38-2000-S	0 - 2,000 psi	

2½" Gauges

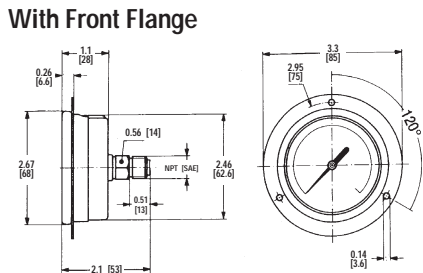
Stem Mount



Panel Mount



With Front Flange



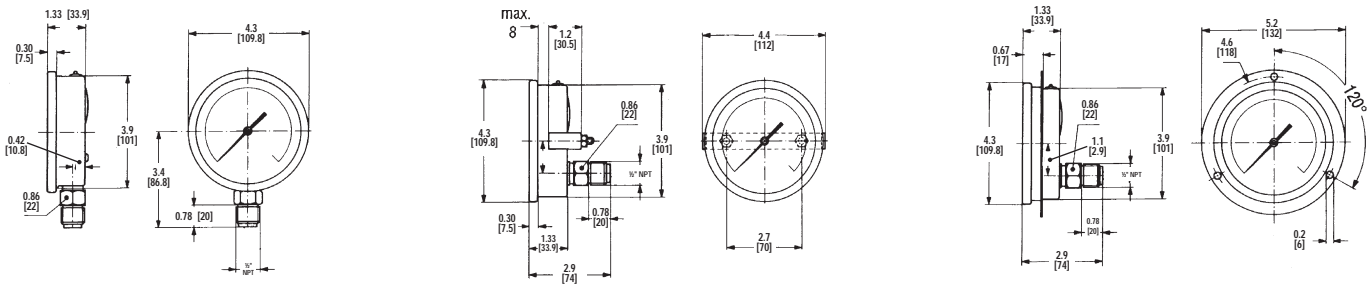
2½" Dial, Stem Mount

Donaldson Part No.	LHA Part No.	Pressure Range	Thread Type
P562718	PGL-A-63-N-B-30-CS	30" Hg + 20 psi	1/4" NPT
P562719	PGL-A-63-N-B-30-S	0 - 30 psi	1/4" NPT
P562721	PGL-A-63-N-B-30-VS	0 - 30" Hg	1/4" NPT
P562733	PGL-A-63-N-B-60-S	0 - 60 psi	1/4" NPT
P562705	PGL-A-63-N-B-100-S	0 - 100 psi	1/4" NPT
P562709	PGL-A-63-N-B-160-S	0 - 160 psi	1/4" NPT
P562717	PGL-A-63-N-B-300-S	0 - 300 psi	1/4" NPT
P562727	PGL-A-63-N-B-500-S	0 - 500 psi	1/4" NPT
P562731	PGL-A-63-N-B-600-S	0 - 600 psi	1/4" NPT
P562703	PGL-A-63-N-B-1000-S	0 - 1,000 psi	1/4" NPT
P562707	PGL-A-63-N-B-1500-S	0 - 1,500 psi	1/4" NPT
P562711	PGL-A-63-N-B-2000-S	0 - 2,000 psi	1/4" NPT
P562713	PGL-A-63-N-B-3000-S	0 - 3,000 psi	1/4" NPT
P562723	PGL-A-63-N-B-4000-S	0 - 4,000 psi	1/4" NPT
P562725	PGL-A-63-N-B-5000-S	0 - 5,000 psi	1/4" NPT
P562729	PGL-A-63-N-B-6000-S	0 - 6,000 psi	1/4" NPT
P562701	PGL-A-63-N-B-10,000-S	0 - 10,000 psi	1/4" NPT
P562696	PGL-A-63-B-B-1500-S	0 - 1,500 psi	1/4" BSP
P562739	PGL-A-63-S-B-500-S	0 - 500 psi	1/4" SAE
P562734	PGL-A-63-S-B-1000-S	0 - 1,000 psi	1/4" SAE
P562735	PGL-A-63-S-B-1500-S	0 - 1,500 psi	1/4" SAE
P562736	PGL-A-63-S-B-2000-S	0 - 2,000 psi	1/4" SAE
P562737	PGL-A-63-S-B-3000-S	0 - 3,000 psi	1/4" SAE
P562738	PGL-A-63-S-B-5000-S	0 - 5,000 psi	1/4" SAE
P562740	PGL-A-63-S-B-6000-S	0 - 6,000 psi	1/4" SAE

2½" Dial, Panel Mount

Donaldson Part No.	LHA Part No.	Pressure Range	Thread Type
P562720	PGL-A-63-N-B-30-VP	0 - 30" Hg	1/4" NPT
P562732	PGL-A-63-N-B-60-P	0 - 60 psi	1/4" NPT
P562704	PGL-A-63-N-B-100-P	0 - 100 psi	1/4" NPT
P562708	PGL-A-63-N-B-160-P	0 - 160 psi	1/4" NPT
P562716	PGL-A-63-N-B-300-P	0 - 300 psi	1/4" NPT
P562726	PGL-A-63-N-B-500-P	0 - 500 psi	1/4" NPT
P562730	PGL-A-63-N-B-600-P	0 - 600 psi	1/4" NPT
P562702	PGL-A-63-N-B-1000-P	0 - 1,000 psi	1/4" NPT
P562706	PGL-A-63-N-B-1500-P	0 - 1,500 psi	1/4" NPT
P562710	PGL-A-63-N-B-2000-P	0 - 2,000 psi	1/4" NPT
P562712	PGL-A-63-N-B-3000-P	0 - 3,000 psi	1/4" NPT
P562722	PGL-A-63-N-B-4000-P	0 - 4,000 psi	1/4" NPT
P562724	PGL-A-63-N-B-5000-P	0 - 5,000 psi	1/4" NPT
P562728	PGL-A-63-N-B-6000-P	0 - 6,000 psi	1/4" NPT
P562700	PGL-A-63-N-B-10,000-P	0 - 10,000 psi	1/4" NPT
P562697	PGL-A-63-B-B-3000-P	0 - 3,000 psi	1/4" BSP
P562698	PGL-A-63-B-B-4000-P	0 - 4,000 psi	1/4" BSP

4" Gauges



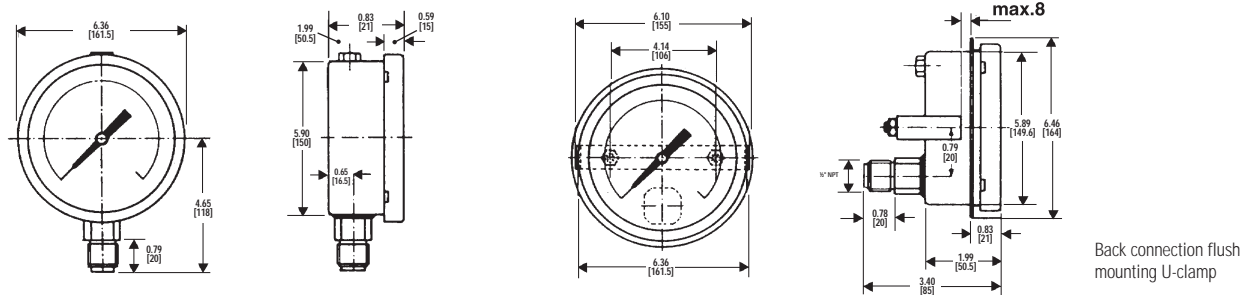
4" Dial, Stem Mount

Donaldson Part No.	LHA Part No.	Pressure Range	Thread Type
P562683	PGL-A-100-N-B-300-S	0 - 300 psi	1/2" NPT
P562688	PGL-A-100-N-B-600-S	0 - 600 psi	1/2" NPT
P562675	PGL-A-100-N-B-1000-S	0 - 1,000 psi	1/2" NPT
P562677	PGL-A-100-N-B-1500-S	0 - 1,500 psi	1/2" NPT
P562679	PGL-A-100-N-B-2000-S	0 - 2,000 psi	1/2" NPT
P562681	PGL-A-100-N-B-3000-S	0 - 3,000 psi	1/2" NPT
P562685	PGL-A-100-N-B-5000-S	0 - 5,000 psi	1/2" NPT
P562686	PGL-A-100-N-B-6000-S	0 - 6,000 psi	1/2" NPT
P562673	PGL-A-100-N-B-10,000-S	0 - 10,000 psi	1/2" NPT
P562672	PGL-A-100-N-B-10,000-P	0 - 10,000 psi	1/2" NPT

4" Dial, Panel Mount

Donaldson Part No.	LHA Part No.	Pressure Range	Thread Type
P562682	PGL-A-100-N-B-300-P	0 - 300 psi	1/2" NPT
P562687	PGL-A-100-N-B-600-P	0 - 600 psi	1/2" NPT
P562674	PGL-A-100-N-B-1000-P	0 - 1,000 psi	1/2" NPT
P562676	PGL-A-100-N-B-1500-P	0 - 1,500 psi	1/2" NPT
P562678	PGL-A-100-N-B-2000-P	0 - 2,000 psi	1/2" NPT
P562680	PGL-A-100-N-B-3000-P	0 - 3,000 psi	1/2" NPT
P562684	PGL-A-100-N-B-5000-P	0 - 5,000 psi	1/2" NPT

6" Gauges



6" Dial, Stem Mount

Donaldson Part No.	LHA Part No.	Pressure Range	Thread Type
P562693	PGL-A-150-N-B-3000-S	0 - 3,000 psi	1/2" NPT
P562695	PGL-A-150-N-B-5000-S	0 - 5,000 psi	1/2" NPT

6" Dial, Panel Mount

Donaldson Part No.	LHA Part No.	Pressure Range	Thread Type
P562691	PGL-A-150-N-B-2000-P	0 - 2,000 psi	1/2" NPT
P562692	PGL-A-150-N-B-3000-P	0 - 3,000 psi	1/2" NPT
P562694	PGL-A-150-N-B-5000-P	0 - 5,000 psi	1/2" NPT
P562690	PGL-A-150-N-B-10,000-P	0 - 10,000 psi	1/2" NPT