

Suction Strainers

Flow Range: 0-600 *gpm* / 0-2,274 *l/min*

Outlet Port Size: 3/8" NPT to 6" NPT

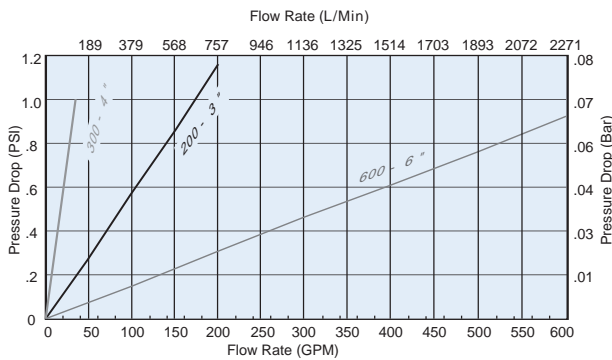
Stainless Steel Mesh
 Steel or nylon fittings
 Operating temperatures:
 Steel fitting to 250°F / 121°C
 Nylon fitting to 210°F / 100°C
 Relief valve available



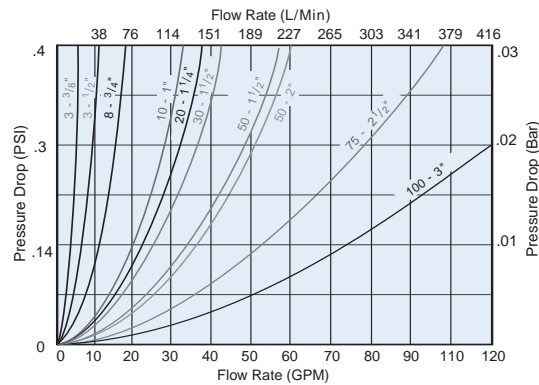
Features

Donaldson suction strainers are zinc-plated, with stainless steel mesh screens and rugged steel core centers epoxy bonded to heavy gauge connector and end caps. Suction strainers filter petroleum-based hydraulic fluids, phosphate esters, water glycols, lubricating oils, coolants, fuels and water in fluid reservoirs, sumps and similar applications. They are cleanable and reusable. Clean by swishing in non-caustic solvent, then blow dry from inner diameter to outer diameter with compressed air.

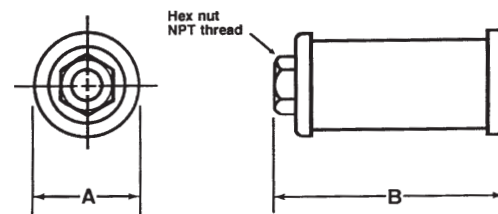
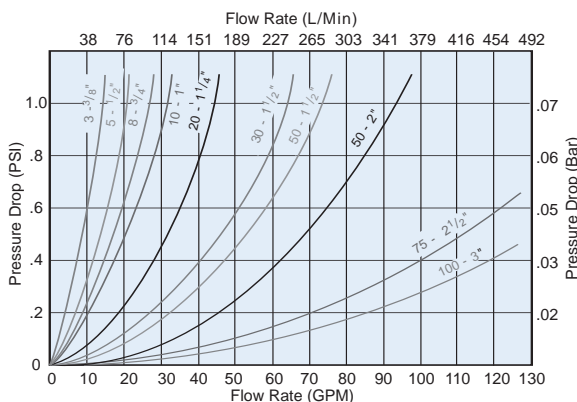
SEC 200-600



PEC 3-100



SEH/SEC 3-100



Note: PEC and SEH model strainers have hex nut style outlet fittings (pictured at top of page). SEC model strainers have pipe coupling style (round) outlet fittings. All styles have NPT threads inside.

| | Donaldson Part No. | LHA Part No. | With Valve Relief | Outlet Pipe Size | Wire Mesh Size | Dim. A | Dim. B | Screen Area (sq.in.) | Max. Flow (gpm) |
|---------------|--------------------|----------------------|-------------------|------------------|----------------|--------|--------|----------------------|-----------------|
| NYLON FITTING | P562235 | PEC-3-3/8-100 | | 3/8" NPT | 100 | 1.9 | 2.7 | 20 | 3 |
| | P562240 | PEC-5-1/2-100 | | 1/2" NPT | 100 | 1.9 | 4.3 | 25 | 5 |
| | P562241 | PEC-5-1/2-200 | | 1/2" NPT | 200 | 1.9 | 4.3 | 25 | 5 |
| | P562245 | PEC-8-3/4-100 | | 3/4" NPT | 100 | 2.7 | 4.3 | 40 | 8 |
| | P562246 | PEC-8-3/4-100-RV3 | 3 psid | 3/4" NPT | 100 | 2.7 | 4.3 | 40 | 8 |
| | P562244 | PEC-8-1-100 | | 1" NPT | 100 | 2.7 | 4.3 | — | 8 |
| | P562226 | PEC-10-1-100 | | 1" NPT | 100 | 2.7 | 5.6 | 70 | 10 |
| | P562227 | PEC-10-1-100-RV3 | 3 psid | 1" NPT | 100 | 2.7 | 5.6 | 70 | 10 |
| | P562228 | PEC-20-1.1/4-100 | | 1-1/4" NPT | 100 | 3.4 | 5.6 | 128 | 20 |
| | P562229 | PEC-20-1.1/4-100-RV3 | 3 psid | 1-1/4" NPT | 100 | 3.4 | 5.6 | 128 | 20 |
| | P562230 | PEC-20-1.1/4-100-RV5 | 5 psid | 1-1/4" NPT | 100 | 3.4 | 5.6 | 128 | 20 |
| | P562231 | PEC-20-1.1/4-200 | | 1-1/4" NPT | 200 | 3.4 | 5.6 | 128 | 20 |
| | P562232 | PEC-30-1.1/2-100 | | 1-1/2" NPT | 100 | 3.4 | 5.6 | 128 | 30 |
| | P562233 | PEC-30-1.1/2-100-RV3 | 3 psid | 1-1/2" NPT | 100 | 3.4 | 5.6 | 128 | 30 |
| | P562234 | PEC-30-1.1/2-100-RV5 | 5 psid | 1-1/2" NPT | 100 | 3.4 | 5.6 | 128 | 30 |
| | P562236 | PEC-50-1.1/2-100 | | 1-1/2" NPT | 100 | 4 | 8 | 200 | 50 |
| | P562237 | PEC-50-1.1/2-100-RV3 | 3 psid | 1-1/2" NPT | 100 | 4 | 8 | 200 | 50 |
| | P562238 | PEC-50-2-100 | | 2" NPT | 100 | 4 | 10.4 | 200 | 50 |
| | P562239 | PEC-50-2-100-RV3 | 3 psid | 2" NPT | 100 | 4 | 10.4 | 200 | 50 |
| | P562242 | PEC-75-2.1/2-100 | | 2-1/2" NPT | 100 | 5.2 | 8.5 | 316 | 75 |
| | P562243 | PEC-75-2.1/2-100-RV3 | 3 psid | 2-1/2" NPT | 100 | 5.2 | 8.5 | 316 | 75 |
| | P562223 | PEC-100-3-100 | | 3" NPT | 100 | 5.2 | 10.9 | 379 | 100 |
| | P562224 | PEC-100-3-100-RV3 | 3 psid | 3" NPT | 100 | 5.2 | 10.9 | 379 | 100 |
| | P562225 | PEC-100-3-100-SST | | 3" NPT | 100 | 5.2 | 10.9 | 379 | 100 |
| | STEEL FITTING | P562221 | SEH-3-3/8-100 | | 3/8" NPT | 100 | 1.9 | 2.5 | 34 |
| P169012 | | SEH-5-1/2-100 | | 1/2" NPT | 100 | 2.63 | 3.1 | 62 | 5 |
| P563305 | | SEH-5-1/2-100-RV3 | 3 psid | 1/2" NPT | 100 | 2.7 | 3.1 | 62 | 5 |
| P169013 | | SEH-8-3/4-100 | | 3/4" NPT | 100 | 2.63 | 3.55 | 68 | 8 |
| P173910 | | SEH-8-3/4-100-RV3 | 3 psid | 3/4" NPT | 100 | 2.63 | 3.55 | 68 | 8 |
| P169014 | | SEH-10-1-100 | | 1" NPT | 100 | 2.63 | 5.35 | 110 | 10 |
| P173911 | | SEH-10-1-100-RV3 | 3 psid | 1" NPT | 100 | 2.63 | 5.35 | 110 | 10 |
| P562218 | | SEH-10-1-200 | | 1" NPT | 200 | 2.7 | 5.4 | 110 | 10 |
| P562219 | | SEH-13-1-200 | | 1" NPT | 200 | 3.4 | 3.5 | — | 13 |
| P169015 | | SEH-20-1.1/4-100 | | 1-1/4" NPT | 100 | 3.38 | 6.85 | 162 | 20 |
| P173912 | | SEH-20-1.1/4-100-RV3 | 3 psid | 1-1/4" NPT | 100 | 3.38 | 6.85 | 162 | 20 |
| P169016 | | SEH-30-1.1/2-100 | | 1-1/2" NPT | 100 | 3.38 | 8.01 | 225 | 30 |
| P173913 | | SEH-30-1.1/2-100-RV3 | 3 psid | 1-1/2" NPT | 100 | 3.38 | 8.01 | 225 | 30 |
| P169017 | | SEH-50-1.1/2-100 | | 1-1/2" NPT | 100 | 3.94 | 9.8 | 340 | 50 |
| P173914 | | SEH-50-1.1/2-100-RV3 | 3 psid | 1-1/2" NPT | 100 | 3.94 | 9.8 | 340 | 50 |
| P562222 | | SEH-50-1.1/2-60 | | 1-1/2" NPT | 60 | 3.94 | 9.8 | 340 | 50 |
| P169018 | | SEH-50-2-100 | | 2" NPT | 100 | 3.94 | 9.8 | 340 | 50 |
| P173915 | | SEH-50-2-100-RV3 | 3 psid | 2" NPT | 100 | 3.94 | 9.8 | 340 | 50 |
| P169019 | | SEC-75-2.1/2-100 | | 2-1/2" NPT | 100 | 5.12 | 10.1 | 400 | 75 |
| P173916 | | SEC-75-2.1/2-100-RV3 | 3 psid | 2-1/2" NPT | 100 | 5.12 | 10.1 | 400 | 75 |
| P169020 | | SEC-100-3-100 | | 3" NPT | 100 | 5.12 | 11.78 | 500 | 100 |
| P173917 | | SEC-100-3-100-RV3 | 3 psid | 3" NPT | 100 | 5.12 | 11.78 | 500 | 100 |
| P562211 | | SEC-100-3-60 | | 3" NPT | 60 | 5.12 | 11.78 | 500 | 100 |
| P562212 | | SEC-100-3-60-RV3 | 3 psid | 3" NPT | 60 | 5.12 | 11.78 | 500 | 100 |
| P562213 | | SEC-200-3-100 | | 3" NPT | 100 | 8.1 | 11.3 | 965 | 200 |
| P563304 | | SEC-200-3-100-RV3 | 3 psid | 3" NPT | 100 | 8.1 | 11.3 | 965 | 200 |
| P562214 | | SEC-300-4-100 | | 4" NPT | 100 | 8.1 | 15 | 1370 | 300 |
| P562215 | | SEC-300-4-100-RV3 | 3 psid | 4" NPT | 100 | 8.1 | 15 | 1370 | 300 |
| P562216 | | SEC-600-6-100 | | 6" NPT | 100 | 10.2 | 20.4 | 2370 | 600 |
| P562217 | | SEC-600-6-100-RV3 | 3 psid | 6" NPT | 100 | 10.2 | 20.4 | 2370 | 600 |

Tank Mounted Strainers

Flow Range: 0-600 *gpm* / 0-2,274 *l/min*

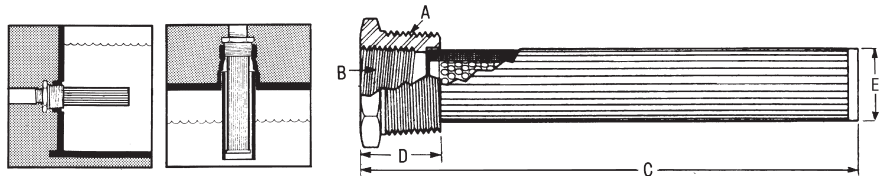
Outlet Port Size: 3/8" NPT to 1 1/4" NPT

140 Micron Stainless Steel Mesh
Steel SAE bushing
Cast iron NPT bushing
Operating temperatures to 250°F / 121°C
Relief valve available



Features

Tank mounted strainers offer easy installation. Access to reservoir interior is not needed. You can mount these units through a sidewall or through the tank top and into a standpipe.



| Donaldson Part No. | LHA Part No. | With Valve Relief | Wire Mesh Size | Dim. A | Dim. B | Dim. C | Dim. D | Dim. E | Screen Area (sq.in.) | Max. Flow (gpm) |
|--------------------|-------------------|-------------------|----------------|-----------------|-----------------|--------|--------|--------|----------------------|-----------------|
| P562270 | TM-3-100 | | 100 | 3/4" NPT | 3/8" NPT | 4 | 0.97 | 0.87 | 29 | 3 |
| P562274 | TM-5-100 | | 100 | 1" NPT | 1/2" NPT | 5.34 | 1.06 | 1.17 | 35 | 5 |
| P562275 | TM-5-100-RV5 | 5 psid | 100 | 1" NPT | 1/2" NPT | 5.34 | 1.06 | 1.17 | 35 | 5 |
| P562256 | TM-10-100 | | 100 | 1-1/4" NPT | 3/4" NPT | 8.17 | 1.2 | 1.36 | 64 | 10 |
| P562257 | TM-10-100-RV5 | 5 psid | 100 | 1-1/4" NPT | 3/4" NPT | 8.17 | 1.2 | 1.36 | 64 | 10 |
| P562258 | TM-10-60 | | 60 | 1-1/4" NPT | 3/4" NPT | 8.17 | 1.2 | 1.36 | 64 | 10 |
| P562259 | TM-10-60-RV5 | 5 psid | 60 | 1-1/4" NPT | 3/4" NPT | 8.17 | 1.2 | 1.36 | 64 | 10 |
| P562260 | TM-15-100 | | 100 | 1-1/2" NPT | 1" NPT | 8.2 | 1.22 | 1.66 | 86 | 15 |
| P562264 | TM-15-100-RV5 | 5 psid | 100 | 1-1/2" NPT | 1" NPT | 8.2 | 1.22 | 1.66 | 86 | 15 |
| P562265 | TM-15-200-RV5 | 5 psid | 200 | 1-1/2" NPT | 1" NPT | 8.2 | 1.22 | 1.66 | 86 | 15 |
| P562266 | TM-25-100 | | 100 | 2" NPT | 1-1/4" NPT | 9.04 | 1.35 | 2.12 | 125 | 25 |
| P562267 | TM-25-100-RV5 | 5 psid | 100 | 2" NPT | 1-1/4" NPT | 9.04 | 1.35 | 2.12 | 125 | 25 |
| P562268 | TM-25-200-C=6.29" | | 200 | 2" NPT | 1-1/4" NPT | 6.29 | 1.35 | 2.12 | | |
| P562269 | TM-25-200-RV5 | 5 psid | 200 | 2" NPT | 1-1/4" NPT | 9.04 | 1.35 | 2.12 | 125 | 25 |
| P562271 | TM-50-100 | | 100 | 3" NPT | 2" NPT | 9.7 | 1.7 | 3 | 260 | 50 |
| P562272 | TM-50-100-RV3 | 3 psid | 100 | 3" NPT | 2" NPT | 9.7 | 1.7 | 3 | 260 | 50 |
| P562273 | TM-50-100-RV5 | 5 psid | 100 | 3" NPT | 2" NPT | 9.7 | 1.7 | 3 | 260 | 50 |
| P563306 | TM-100-100 | | 100 | 4" NPT | 3" NPT | 11.3 | 1.8 | 4 | 315 | 100 |
| P562255 | TM-100-100-RV5 | 5 psid | 100 | 4" NPT | 3" NPT | 11.3 | 1.8 | 4 | 315 | 100 |
| P562253 | STM-5-100 | | 100 | 1-5/16" - 12 UN | 3/4" - 16 UN | 5.34 | 1.06 | 1.17 | 35 | 5 |
| P562254 | STM-5-100-RV5 | 5 psid | 100 | 1-5/8" - 12 UN | 3/4" - 16 UN | 5.34 | 1.06 | 1.17 | 35 | 5 |
| P562247 | STM-10-100 | | 100 | 1-5/8" - 12 UN | 1-1/16" - 12 UN | 8.17 | 1.2 | 1.36 | 64 | 10 |
| P562248 | STM-10-100-RV5 | 5 psid | 100 | 1-5/8" - 12 UN | 1-1/16" - 12 UN | 8.17 | 1.2 | 1.36 | 64 | 10 |
| P562249 | STM-15-100 | | 100 | 1-7/8" - 12 UN | 1-5/16" - 12 UN | 8.2 | 1.22 | 1.66 | 86 | 15 |
| P562250 | STM-15-100-RV5 | 5 psid | 100 | 1-7/8" - 12 UN | 1-5/16" - 12 UN | 8.2 | 1.22 | 1.66 | 86 | 15 |
| P562251 | STM-25-100 | | 100 | 2-1/2" - 12 UN | 1-5/8" - 12 UN | 9.04 | 1.35 | 2.12 | 125 | 25 |
| P562252 | STM-25-100-RV5 | 5 psid | 100 | 2-1/2" - 12 UN | 1-5/8" - 12 UN | 9.04 | 1.35 | 2.12 | 125 | 25 |

Diffusers

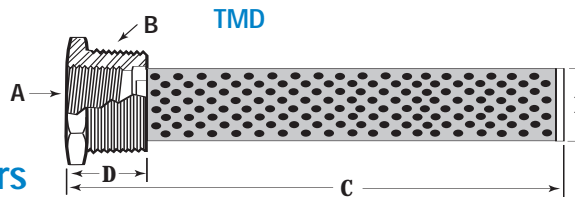
Description:

Perforated Steel
 Cast iron bushings (TMD-tank mount)
 Zinc-plated steel (DFD-return line)
 Operating temperatures to 250°F / 121°C



Features

Diffusers are highly effective in reducing aeration, foaming, turbulence and noise caused by return lines. Reservoir baffles can usually be eliminated, provided that the holes in the tube are positioned facing away from the pump suction inlet and below the reservoir oil level. Can be vertically or horizontally mounted with discharge side directed away from suction and preferably toward a tank wall or bottom.



TMD - Tank Mount Diffusers

| Donaldson Part No. | LHA Part No. | Rated Flow gpm/l/min | Dim. A Pipe Size | Dim. B Pipe Size | C (in./mm) | D (in./mm) | E (in./mm) |
|--------------------|--------------|----------------------|------------------|------------------|------------|------------|------------|
| P562281 | TMD-5 | 5/19 | 1/2" NPT | 1" NPT | 5.34/135 | 1.06/28 | 1.17/29 |
| P562282 | TMD-10 | 10/38 | 3/4" NPT | 1-1/4" NPT | 8.17/207 | 1.2/30 | 1.36/34 |
| P562283 | TMD-15 | 15/59 | 1" NPT | 1-1/2" NPT | 8.2/208 | 1.22/31 | 1.66/42 |
| P562284 | TMD-25 | 25/95 | 1-1/4" NPT | 2" NPT | 9.04/229 | 1.35/34 | 2.12/53 |
| P562285 | TMD-50 | 50/189 | 2" NPT | 3" NPT | 9.7/246 | 1.7/43 | 3.0/76 |
| P562286 | TMD-100 | 100/378 | 3" NPT | 4" NPT | 11.3/287 | 1.8/45 | 4.0/101 |

DFD - Line Mount Diffusers

| Donaldson Part No. | LHA Part No. | Rated Flow gpm/l/min | Pipe Size | A (in./mm) | B (in./mm) |
|--------------------|--------------|----------------------|-----------------|------------|------------|
| P562287 | DFD-30 | 33/125 | 3/4" NPT | 3.4/86.3 | 3.0/76 |
| P562288 | DFD-60 | 53/201 | 1" NPT | 3.4/86.3 | 4.2/107 |
| P562289 | DFD-90 | 93/342 | 1-1/4" NPT | 3.4/86.3 | 6.5/165 |
| P562294 | DFD-90-M | 93/342 | 1-1/4" NPT Male | 3.4/86.3 | 6.5/165 |
| P562290 | DFD-120 | 126/479 | 1-1/2" NPT | 4.5/114.3 | 6.6/168 |
| P562291 | DFD-200 | 209/794 | 2" NPT | 4.5/114.3 | 10.3/262 |
| P562292 | DFD-250 | 300/1140 | 2-1/2" NPT | 5.25/133.4 | 13.0/330 |
| P562293 | DFD-300 | 450/1748 | 3" NPT | 5.25/133.4 | 12.3/394 |

DFD

