

P-EG stainless steel housing

Stainless steel gas filter housing in industrial quality

Product description:

P-EG filter housings have been developed for the purification of compressed air and other technical gases in industrial ranges of application. Due to the optimized construction they offer low differential pressure at high flow rates. Numerous different sizes of housings with various connections make it possible to adopt the filter system to exactly the needed requirements.

In this product series there are 18 different sizes of housings for operating volume flows of 60 to 23.040 Nm³/h related to 7 bar(g). The Donaldson Ultrafilter plug connection guarantees that the elements remain safely fixed at all times. Due to the modular design different element types can be installed into the housing. That means, even if the demands will change, Donaldson Ultrafilter will adapt as well.

The P-EG filter housing complies to the requirements of the European directive 97/23/EG for pressure vessels.



Stainless steel housing P-EG – industrial quality

Technical data

Materials:	
Filter housings:	stainless steel 1.4301 (304) or 1.4404 (316L)
Coupling nut:	stainless steel 1.4301 (304)
Plug:	stainless steel 1.4301 (304)
Housing gasket	EPDM (other gaskets on request)

Surface finish:	
Inner:	
0006-0288	etched and passivated R _a 1,6
0432-1920	etched and passivated R _a 1,6
Outer:	
0006-0288	etched, passivated and polished R _a 1,6
0432-1920	etched and passivated R _a 1,6

Maximum operating pressure:	
0006 - 0192	16 bar
0288	12 bar
0432-1920	10 bar

Connection types	
BSP thread connection (Standard for 0006-0288 single-housings)	
DIN flange (standard starting at 0432 multiple housing)	
Welded ends	
Other connections and bigger housings are available on request	

Maximum operating temperature:	
200°C	

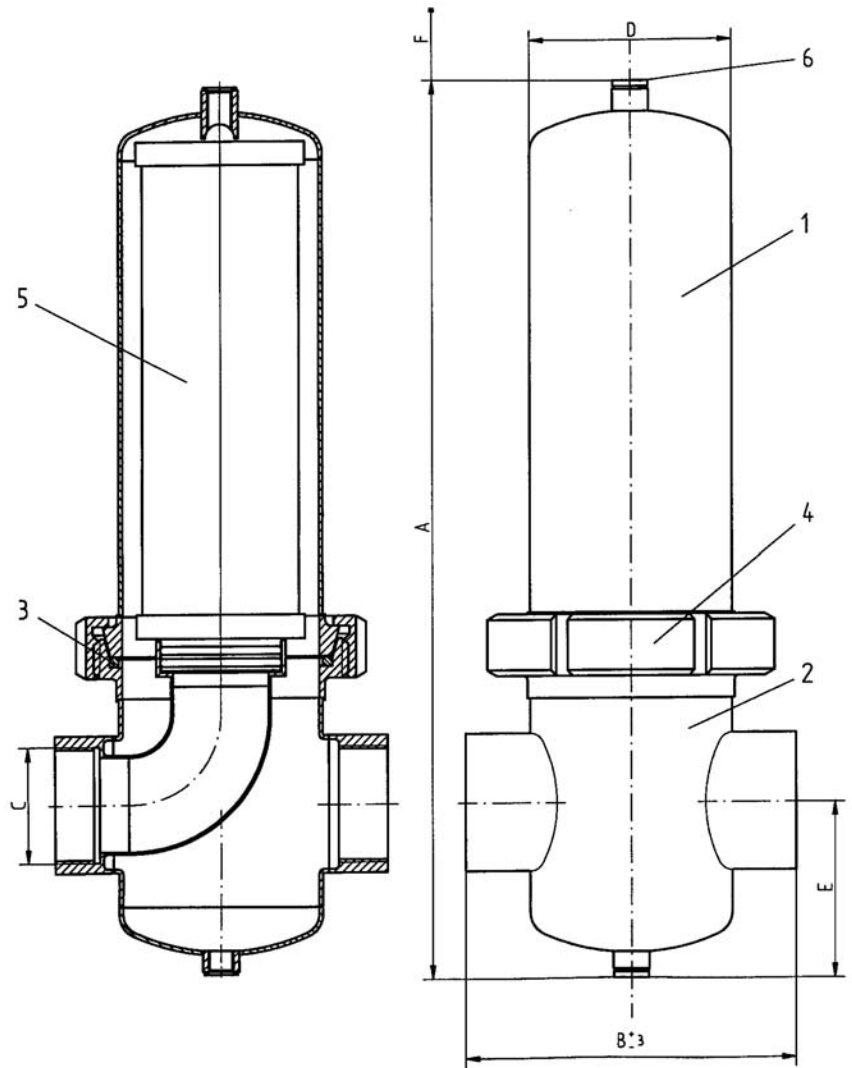
Technical alterations reserved (R02/ 2007/05/11)

Process filter type P-EG 0006-0288 with thread connection

Pos.	Piece	Description
6	2	plug
5	1	filter element
4	1	nut
3	1	housing gasket
2	1	lower housing bowl
1	1	upper housing bowl

Max. operating pressure:	
0006-0192:	16 bar
0288:	12 bar
Test pressure:	
	<u>1.4301</u> <u>1.4404</u>
0006-0192:	29.3 bar 27.0 bar
0288:	22.0 bar 20.2 bar
Design temperature:	200°C
Max. operating temperature:	-25 / +150°C
Material housing:	1.4301 or 1.4404/1.4435
Attaching parts:	1.4301
Surface finish:	
inside R _a 1,6; etched and passivated	
outside R _a 1,6; etched, passivated and polished	

Classification acc. to 97/23/EG for fluids group 2	
P-EG 0006-0048	Art. 3, par. 3
P-EG 0072-0288	Cat. I



Size	Volume (l)	Weight* (kg)	A mm	B mm	C	ø D mm	E mm	F mm	Element
0006	0.55	1.7	215	105	G 1/4"	70	55	90	03/10
0009	0.65	1.9	243	105	G 3/8"	70	55	120	04/10
0012	0.65	1.9	243	108	G 1/2"	70	55	120	04/20
0018	0.75	2.0	266	125	G 3/4"	70	55	150	05/20
0027	1.0	2.6	293	125	G 1"	85	74	150	05/25
0036	1.25	3.0	344	140	G 1 1/4"	85	74	200	07/25
0048	2.3	4.3	386	170	G 1 1/2"	104	94	200	07/30
0072	3.3	4.8	460	170	G 2"	104	94	280	10/30
0108	4.3	5.3	587	170	G 2"	104	94	450	15/30
0144	8.0	9.0	732	216	G 2 1/2"	129	106	580	20/30
0192	11.1	10.8	987	216	G 3"	129	106	850	30/30
0288	16.5	16.2	1026	240	G 3"	154	119	850	30/50

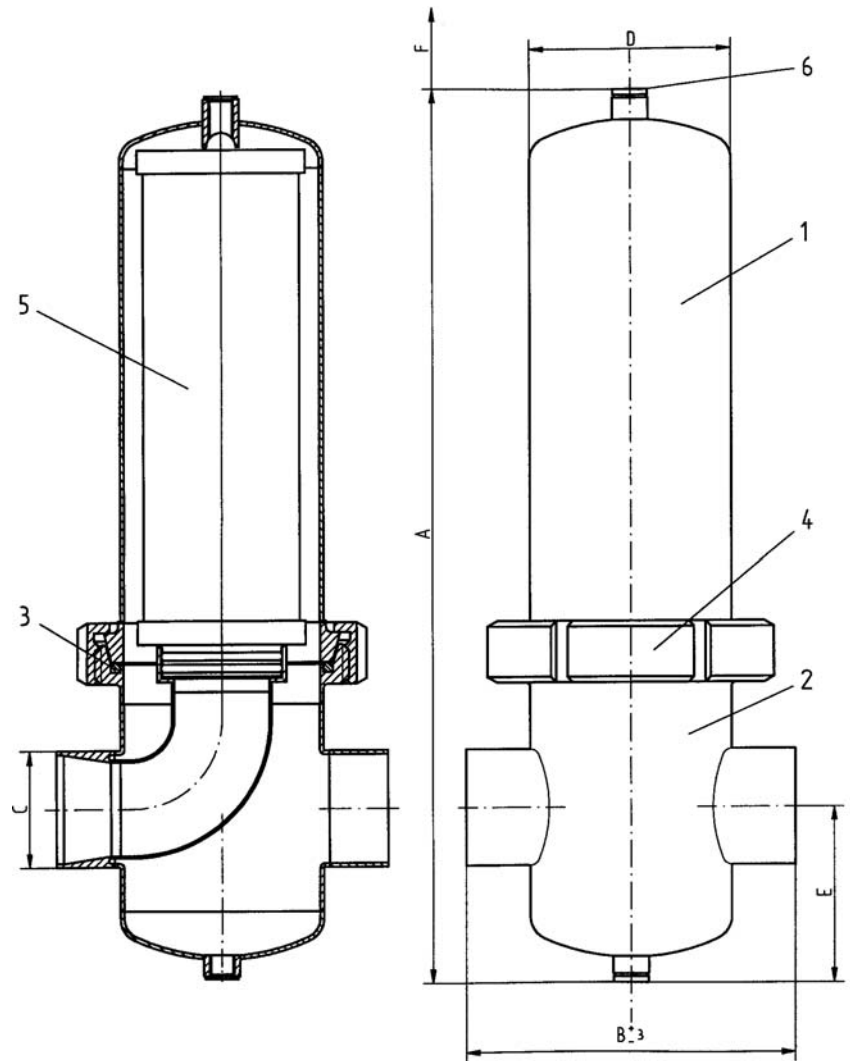
* without filter element

Process filter type P-EG 0006-0288 with welded ends for ISO-pipe

Pos.	Piece	Description
6	2	plug
5	1	filter element
4	1	nut
3	1	housing gasket
2	1	lower housing bowl
1	1	upper housing bowl

Max. operating pressure:	
0006-0192:	16 bar
0288:	12 bar
Test pressure:	
	<u>1.4301</u> <u>1.4404</u>
0006-0192:	29.3 bar 27.0 bar
0288:	22.0 bar 20.2 bar
Design temperature:	200°C
Max. operating temperature:	-25 / +150°C
Material housing:	1.4301 or 1.4404/1.4435
Attaching parts:	1.4301
Surface finish:	inside R _a 1,6; etched and passivated outside R _a 1,6; etched, passivated and polished

Classification acc. to 97/23/EG for fluids group 2	
P-EG 0006-0048	Art. 3, par. 3
P-EG 0072-0288	Cat. I



Size	Volume (l)	Weight* (kg)	A mm	B mm	C	ø D mm	E mm	F mm	Element
0006	0.55	1.7	215	105	17.2/DN 10	70	55	90	03/10
0009	0.65	1.9	243	105	17.2/DN 10	70	55	120	04/10
0012	0.65	1.9	243	108	21.3/DN 15	70	55	120	04/20
0018	0.75	2.0	266	125	26.9/DN 20	70	55	150	05/20
0027	1.0	2.6	293	125	33.7/DN 25	85	74	150	05/25
0036	1.25	3.0	344	140	42.4/DN 32	85	74	200	07/25
0048	2.3	4.3	386	170	48.3/DN 40	104	94	200	07/30
0072	3.3	4.8	460	170	60.3/DN 50	104	94	280	10/30
0108	4.3	5.3	587	170	60.3/DN 50	104	94	450	15/30
0144	8.0	9.0	732	216	76.1/DN 65	129	106	580	20/30
0192	11.1	10.8	987	216	88.9/DN 80	129	106	850	30/30
0288	16.5	16.2	1026	240	88.9/DN 80	154	119	850	30/50

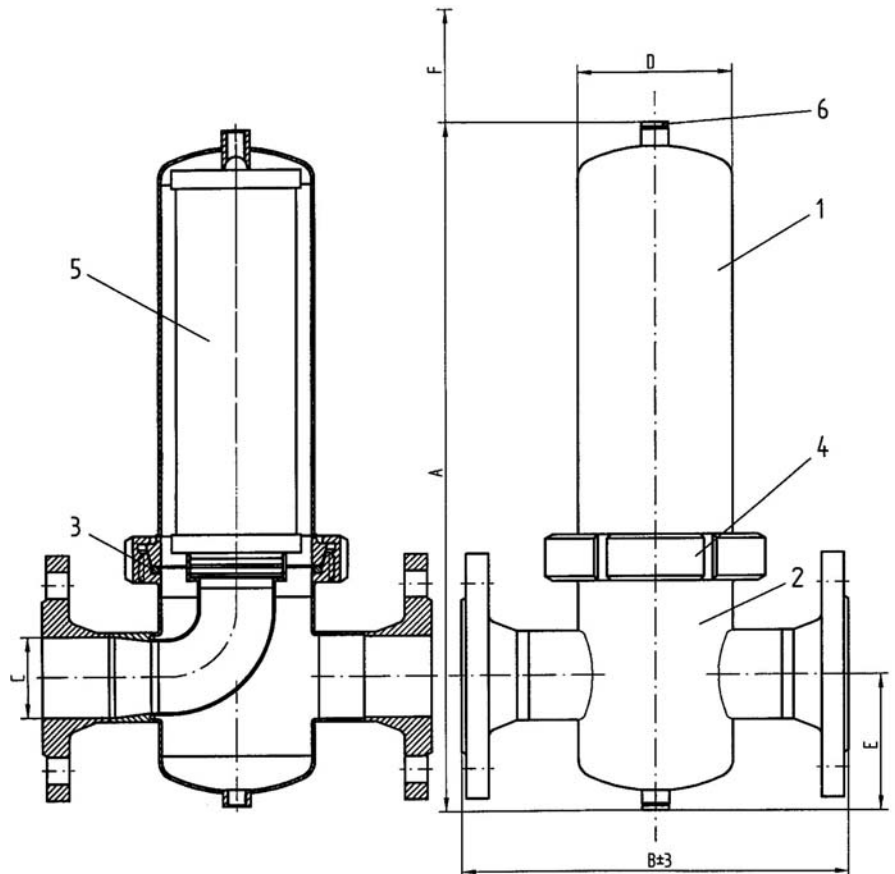
* without filter element

Process filter type P-EG 0006-0288 with flange connection

Pos.	Piece	Description
6	2	plug
5	1	filter element
4	1	nut
3	1	housing gasket
2	1	lower housing bowl
1	1	upper housing bowl

Max. operating pressure:	
0006-0192:	16 bar
0288:	12 bar
Test pressure:	
	<u>1.4301</u> <u>1.4404</u>
0006-0192:	29.3 bar 27.0 bar
0288:	22.0 bar 20.2 bar
Design temperature:	200°C
Max. operating temperature:	-25 / +150°C
Material housing:	1.4301 or 1.4404/1.4435
Attaching parts:	1.4301
Surface finish:	inside $R_a 1,6$; etched and passivated
	outside $R_a 1,6$; etched, passivated and polished

Classification acc. to 97/23/EG for fluids group 2	
P-EG 0006-0048	Art. 3, par. 3
P-EG 0072-0288	Cat. I



Size	Volume (l)	Weight* (kg)	A mm	B mm	C DIN 2633	ø D mm	E mm	F mm	Element
0006	0.55	2,7	215	180	DN 10	70	55	90	03/10
0009	0.65	2,9	243	180	DN 10	70	55	120	04/10
0012	0.65	3,4	243	180	DN 15	70	55	120	04/20
0018	0.75	4,0	266	202	DN 20	70	55	150	05/20
0027	1.0	4,8	293	212	DN 25	85	74	150	05/25
0036	1.25	6,4	344	220	DN 32	85	74	200	07/25
0048	2.3	8,0	386	254	DN 40	104	94	200	07/30
0072	3.3	10,0	460	260	DN 50	104	94	280	10/30
0108	4.3	10,5	587	260	DN 50	104	94	450	15/30
0144	8.0	15,0	732	290	DN 65	129	106	580	20/30
0192	11.1	18,2	987	300	DN 80	129	106	850	30/30
0288	16.5	23,6	1026	340	DN 80	154	119	850	30/50

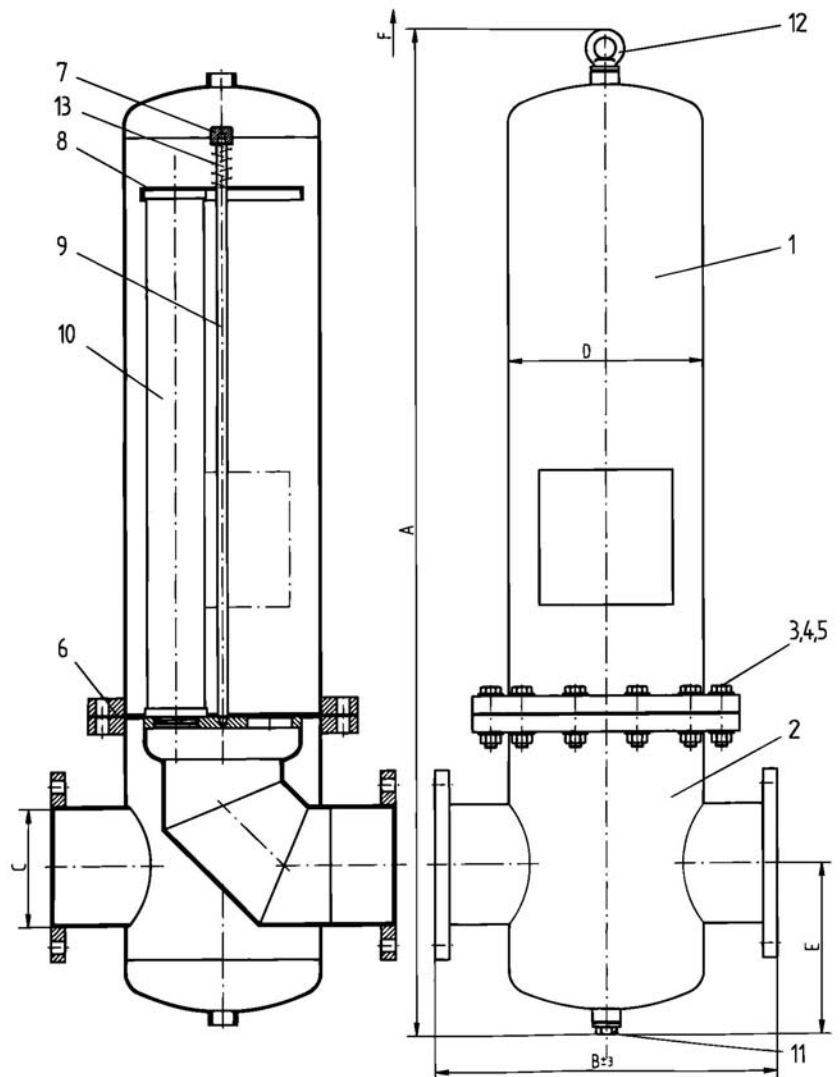
without filter element

Process filter type P-EG 0432-1920 with flange connection

Pos.	Description
13	spring
12	lifting eye bolt
11	plug
10	filter element
9	anchor bolt
8	bracket plate
7	bracket bolt
6	gasket
5	nut
4	washer
3	hexagon bolt
2	lower housing bowl
1	upper housing bowl

Max. operating pressure:	10 bar
Test pressure	18.3 bar
Design temperature:	200°C
Max. operating temperature:	-25 / +150°C
Material housing:	1.4301
Attaching parts:	1.4301
Surface finish:	etched and passivated

Classification acc. to 97/23/EG for fluids group 2	
P-EG 0432-0768	Cat. II
P-EG 1152-1920	Cat. III



Size	Volume (l)	Weight* (kg)	A mm	B mm	C DIN 2576	ø D mm	E mm	F mm	Element
0432	36	43	1090	410	DN 100	219.1	200	580	3x 20/30
0576	45	44	1350	410	DN 100	219.1	200	850	3x30/30
0768	77	70	1410	480	DN 150	273	240	850	4x30/30
1152	110	80	1460	540	DN 150	323.9	250	850	6x30/30
1536	190	135	1600	660	DN 200	406.4	300	850	8x30/30
1920	190	135	1600	660	DN 200	406.4	300	850	10x30/30

* without filter element