

PG-EG stainless steel housing

Stainless steel gas filter housing in sanitary quality.

Product description:

PG-EG filter housings have been developed for the purification of compressed air or other technical gases in the pharmaceutical industry, biotechnology or chemical industry. The housings of the PG-EG product series compose of clamp connection (multiple housing flange) with electro-polished surfaces finish of Ra 0.8 µm. The condensate drain at the bottom side of the housing and the de-aeration at the top side are equipped with pharma valves.

Numerous different sizes of housings with various connections make it possible to adapt the filter system to the needed requirements. In this product series there are 14 different sizes of housings for operating volume flows of 7.5 to 2,700 m³/h related to 1 bar (a) available. The Donaldson Ultrafilter plug connection guarantees that the elements remain safely fixed at all times. Due to the Donaldson Ultrafilter modular design different filter elements can be used in a housing as needed in the application. The range covers prefilters as well as sterile depth- or membrane filters with retention rates down to 0.01 µm. Low differential pressure at high flow rates, the electro-polished surfaces, the clamp connections, and the pharma valves make the PG-EG housing the first choice in critical applications in the sterile filtration of technical gases or compressed air.

The PG-EG filter housing complies to the requirements of the European directive 97/23/EG for pressure vessels.



Filter housing PG-EG in sanitary quality

Technical Data

Materialien:	
Filter housings:	stainless steel 1.4301 (304) or 1.4404 (316L)
Clamp:	stainless steel 1.4301 (304)
Pharma plug:	stainless steel 1.4301 (304)
Pharma valve:	stainless steel 1.4301(304) 1.4301(304)
Housing gasket:	EPDM (other gaskets on request)

Maximum operating pressure:	
0006 - 0192	16 bar
0432-1920	10 bar

Maximum operating temperature:	
Depends on the gasket of the housing, up to 200 °C	

Surface finish:	
0006-1920	etched, passivated, and electro-polished Ra 0.8

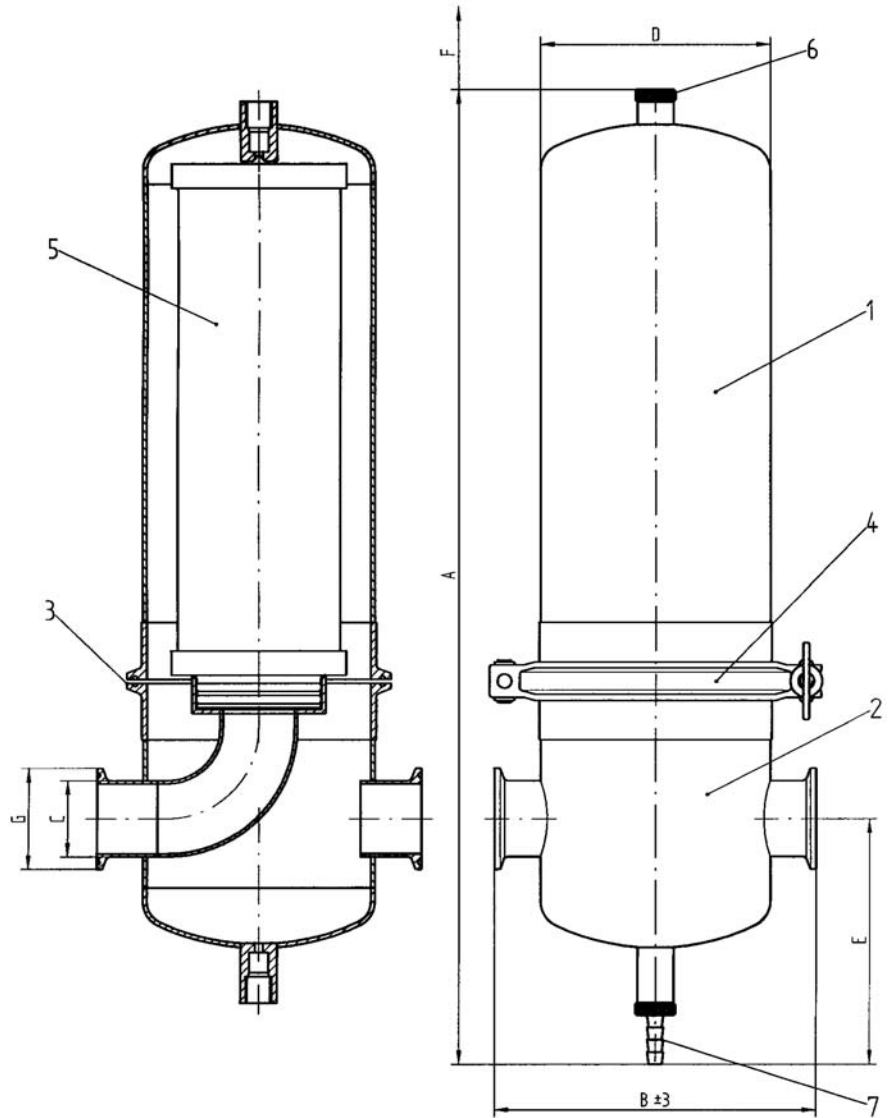
Connection types:	
Clamp (standard at 0006–0192)	
DIN flange (standard starting at 0432; optional up to 0192)	
Welded ends	
Other connections and larger housings are available on request	

Process filter type PG-EG 0006-0192 with clamp connection

Pos.	Description
7	pharma valve
6	pharma plug
5	filter element
4	clamp fastener
3	housing gasket
2	lower housing bowl
1	upper housing bowl

Max. operating pressure:	16 bar
Test pressure:	29,3 bar (1.4301) 27,0 bar (1.4404)
Design-temperature:	200°C
Max. operating temperature:	-25 / +150°C
Material housing:	1.4301 bzw. 1.4404
Attachment parts:	1.4301
Surface finish:	etched, passivated and electropolished inside and outside, Ra 0.8 µm

Classification acc. to 97/23/EG for fluids group 2	
PG-EG 0006-0048	Art. 3, par. 3
PG-EG 0072-0192	Cat. I



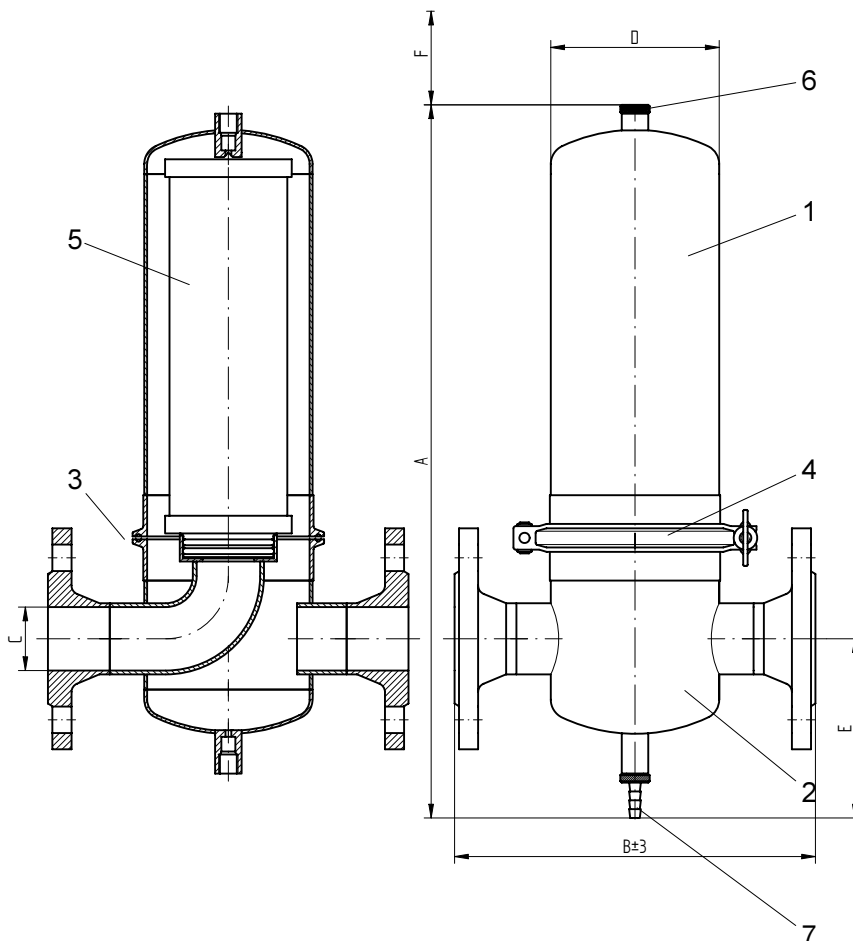
Size	Volume (l)	Weight* (kg)	A mm	B mm	C	ø D mm	E mm	F mm	ø G mm	Element
0006	0.5	1.2	260	120	DN10/ ø17.2	70	98	90	34	03/10
0018	0.75	1.4	315	120	DN15/ ø21.3	70	98	150	34	05/20
0032	2.2	2.8	360	160	DN25/ ø33.7	114.3	136	150	50,5	05/30
0048	2.8	3.1	410	160	DN32/ ø42.4	114.3	126	200	50,5	07/30
0072	3.5	3.5	485	160	DN40/ ø48.3	114.3	117	280	64	10/30
0108	4.7	4.0	610	160	DN50/ ø60.3	114.3	125	450	77,5	15/30
0144	8.3	7.0	820	185	DN65/ ø76.1	129	150	580	91	20/30
0192	11.4	8.8	1080	185	DN80/ ø88.9	129	150	850	106	30/30

* without filter element

Process filter type PG-EG 0006-0192 with flange connection

Pos.	Description
7	pharma valve
6	pharma plug
5	filter element
4	clamp fastener
3	housing gasket
2	lower housing bowl
1	upper housing bowl

Max. operating pressure:	16 bar
Test pressure:	29,3 bar (1.4301) 27,0 bar (1.4404)
Design-temperature:	200°C
Max. operating temperature:	-25 / +150°C
Material housing:	1.4301 bzw. 1.4404
Attachment parts:	1.4301
Surface finish:	etched, passivated and electropolished inside and outside, Ra 0.8 µm



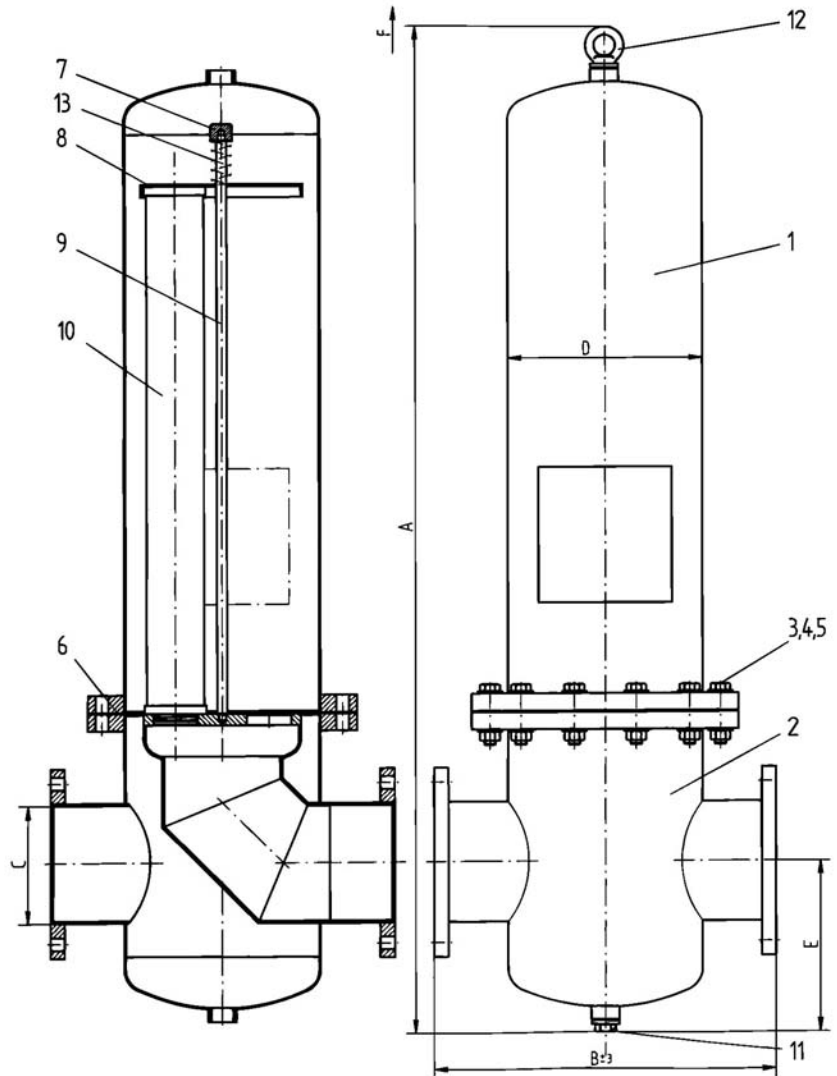
Size	Volume (l)	Weight* (kg)	A mm	B mm	C DIN 2633	ø D mm	E mm	F mm	Element
0006	0.5	2.2	260	190	DN10	70	83	90	03/10
0018	0.75	3.7	315	190	DN15	70	83	150	05/20
0032	2.2	4.8	360	235	DN25	114.3	90	150	05/30
0048	2.8	5.5	410	240	DN32	114.3	90	200	07/30
0072	3.5	7.2	485	245	DN40	114.3	98	280	10/30
0108	4.7	9.0	610	250	DN50	114.3	104	450	15/30
0144	8.3	13.1	820	275	DN65	129	135	580	20/30
0192	11.4	16.2	1080	285	DN80	129	135	850	30/30

* without filter element

Process filter type PG-EG 0432-1920 with flange connection

Pos.	Description
13	spring
12	lifting eye nut
11	plug
10	filter element
9	anchor bolt
8	bracket plate
7	bracket bolt
6	gasket
5	nut
4	washer
3	hexagon bolt
2	lower housing bowl
1	upper housing bowl

Max. operating pressure:	10 bar
Test pressure:	18,3 bar (1.4301) 16,8 bar (1.4404)
Design-temperature:	200°C
Max. operating temperature:	-25 / +150°C
Material housing:	1.4301 or 1.4404
Attachment parts:	1.4301
Surface finish:	etched, passivated and electropolished inside and outside, Ra 0.8



Classification acc. to 97/23/EG for fluids group 2	
PG-EG 0432-0768	Cat II
PG-EG 1152-1920	Cat. II

Size	Volume (l)	Weight* (kg)	A mm	B mm	C DIN 2576	ø D mm	E mm	F mm	Element
0432	36	43	1090	410	DN100	219.1	200	580	3x20/30
0576	45	44	1350	410	DN100	219.1	200	850	3x30/30
0768	77	70	1410	480	DN150	273	240	850	4x30/30
1152	110	80	1460	540	DN150	323.9	250	850	6x30/30
1536	190	135	1600	660	DN200	406.4	300	850	8x30/30
1920	190	135	1600	660	DN200	406.4	300	850	10x30/30

* without filter element