

PF-EG stainless steel housing, series P

Stainless steel anticorrosive liquid filter housing

Product description:

PF-EG series P filter housings have been developed for the filtration in pharmaceutical industry.

The housings of the PF-EG series P are designed with clamp connections.

The surface is electropolished in-and outside to $R_a < 0.5 \mu\text{m}$. The outside of the housing is mirror polished.

The housings are equipped with a pharma valve at the lowest point of inlet.

Venting of filter housing and mounting of (optional) devices for measurement of integrity or pressure is possible through DN 40 clamp connection at housing top.

Numerous different sizes of housings with various connections make it possible to adapt the filter system to exactly the needed requirements.

In this product series there are 8 different sizes of housings for operating volume flows of 12 to 375 l/min, depending on the intended use and the chosen filter element.

The code 7 bajonet-connection guarantees that the elements remain safely fixed at all times.

Due to the Donaldson Ultrafilter modular design different filter elements can be used in a housing as needed.

The range covers prefilters as well as sterile depth- or membrane filters with retention rates up to $0.04 \mu\text{m}$.

The clamp connection between upper and lower bowl makes a fast opening and closing possible.

The PF-EG filter housings comply to the requirements of the European directive 97/23/EG for pressure vessels.

Low differential pressures at high flow rates, the constructive details, based on a maximum in biological safety, offer the highest reliability in operation. The individually created vessel passport makes the PF-EG housing of the series P the first choice for critical applications in the pharmaceutical industries.



Technical data

Materials:	
Filter housing:	stainless steel 1.4404
Housing gasket:	EPDM (other gaskets like PTFE, FEP, Fluoraz or Kalrez on request)
Design pressure:	
10 bar	
Design temperature:	
180°C	
Maximum operating pressure:	
for liquids:	10 bar at 50°C
for saturated steam	3.7 bar at 150°C

Maximum operating temperature:
Depends on the filter element and the sealing of the housing, up to 180°C.

Surface finish:
Inner and outer: $R_a 0.5 \mu\text{m}$, electropolished

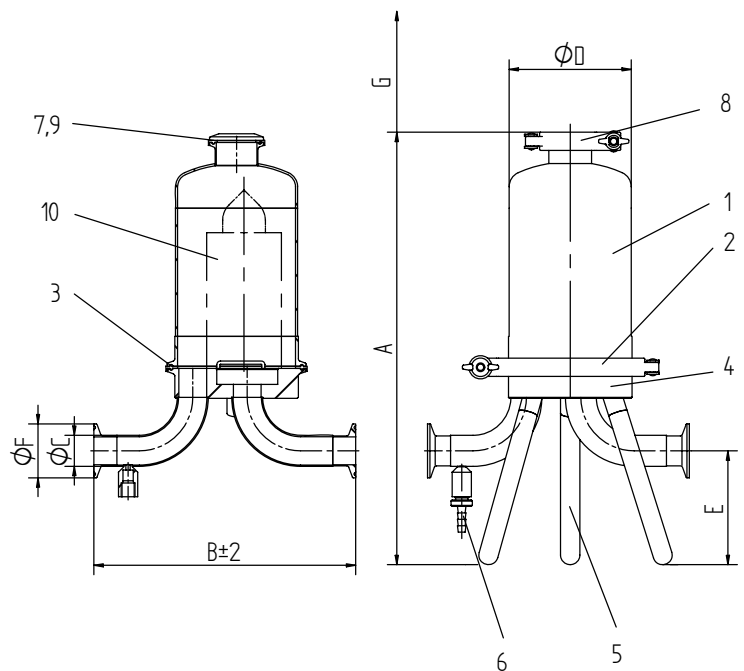
Connections:
Tri Clamp (Standard) Welding ends

Process filter PF-EG 0012 P-0075 P with clamp connection

Pos.	Piece	Description
10	1	filter element (cod 7 connection)
9	1	clamp gasket
8	1	clamp fastener
7	1	clamp blind flange
6	1	pharma valve
5	3	leg
4	1	lower housing bowl
3	1	clamp gasket
2	1	clamp fastener
1	1	upper housing bowl

Max. operating pressure for liquids:	10 bar at min./ max. operating temperature +1°C / 50°C
Max. operating pressure for saturated steam:	3.7 bar at operating temperature 150°C
Design temperature housing:	180°C
Test pressure:	14.3 bar
Material housing:	1.4404
Material attaching parts:	1.4301
Surface finish:	etched, passivated and electropolished inner and outer $R_a < 0,5 \mu\text{m}$ outside mirror polished

Classification acc. to 97/23/EG for fluids of group 1 or 2 individually by conformity-evaluation and danger analysis



Size	Volume (l)	Weight* (kg)	A mm	B mm	C mm	D mm	E mm	ø F mm	G mm	Element
0012 P	1.8	3.8	406	245	DN 25 / ø 29	DN 100	106	50.5	150	5/3 Code 7
0025 P	3.0	4.6	537	245	DN 25 / ø 29	DN 100	106	50.5	280	10/3 Code 7
0050 P	5.5	5.9	797	245	DN 25 / ø 29	DN 100	106	50.5	580	20/3 Code 7
0075 P	8.0	7.2	1056	245	DN 25 / ø 29	DN 100	106	50.5	850	30/3 Code 7

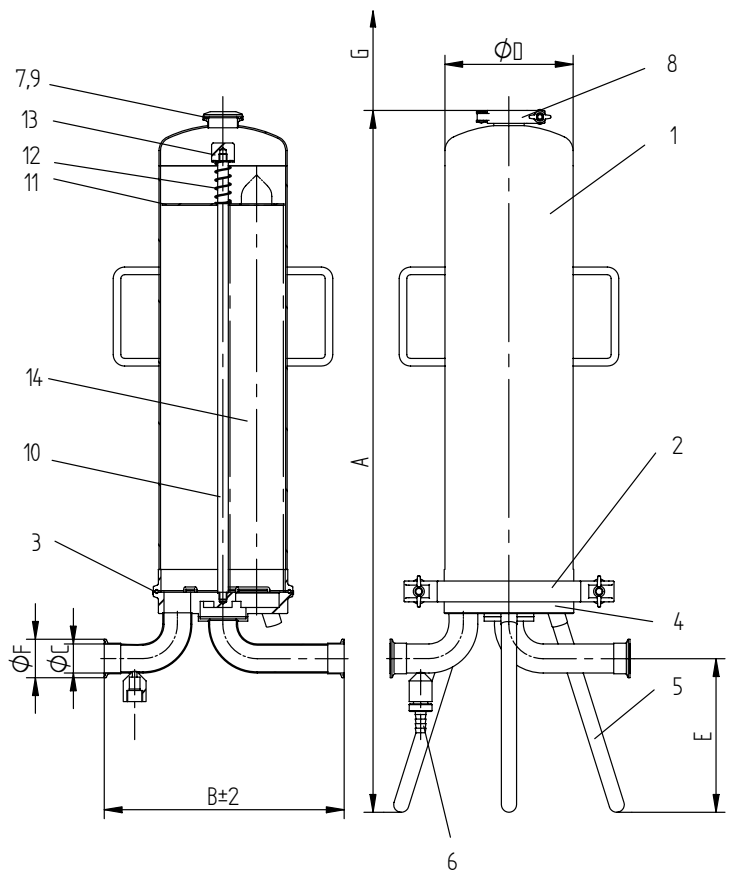
* without filter element, legs included

Process filter PF-EG 0150 P-0375 P with clamp connection

Pos.	Description
14	filter element (code 7 connection)
13	tension nut
12	spring
11	bracket plate
10	tie rod
9	clamp gasket
8	clamp fastener
7	clamp blind flange
6	pharma valve
5	leg
4	lower housing bowl
3	clamp gasket
2	clamp fastener
1	upper housing bowl

Max. operating pressure for liquids:	10 bar at min./ max. operating temperature +1°C / 50°C
Max. operating pressure for saturated steam:	3.7 bar at operating temperature 150°C
Design temperature housing:	180°C
Test pressure:	14.3 bar
Material housing:	1.4404
Material attaching parts:	1.4301
Surface finish	etched, passivated and electropolished inner and outer $R_a < 0,5 \mu\text{m}$ outside mirror polished

Classification acc. to 97/23/EG for fluids of group 1 or 2 individually by conformity-evaluation and danger analysis



Size	Volume (l)	Weight* (kg)	A mm	B mm	C mm	D mm	E mm	ø F mm	G mm	Element
0150 P	12.9	15.9	935	315	DN 40 / ø 38.1	DN 150	194	50,5	580	3x20/3 Code 7
0225 P	18.9	18.2	1205	315	DN 40 / ø 38.1	DN 150	194	50,5	850	3x30/3 Code 7
0250 P	23.3	19.9	935	405	DN 50 / ø 52	DN 200	178	64	580	5x20/3 Code 7
0375 P	32.5	23.1	1205	405	DN 50 / ø 52	DN 200	178	64	850	5x30/3 Code 7

* without filter element, legs included